

Somfy Complimentary IFTTT Applets for **Amazon** Smart Speakers



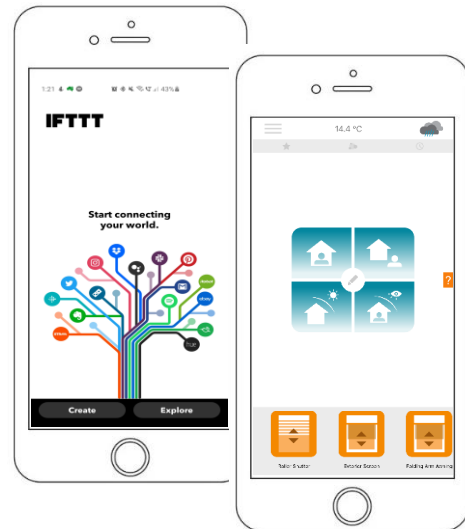
Somfy Complimentary IFTTT Standard Applets for Amazon Smart Speakers Quick Start Guide

Activate your 8 Additional Standard Applets for Amazon Alexa Voice Control, Thanks to Somfy!

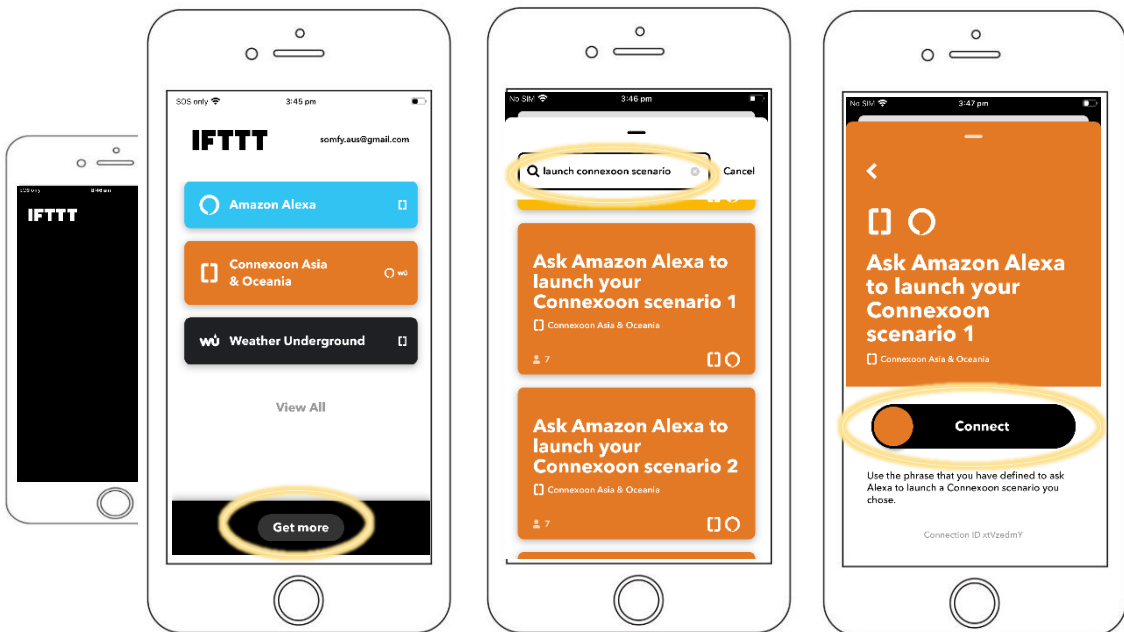
Pre-Start checklist prior to Set up

- Ensure your Amazon smart speaker has been programmed and operational.
- Ensure set-up of Connexoon Window RTS app is complete and paired with the window coverings which you wish to control via your Amazon Smart Speaker.
- Ensure set-up of Connexoon Window RTS Modes & Ambiances is complete in the Connexoon Window RTS app.

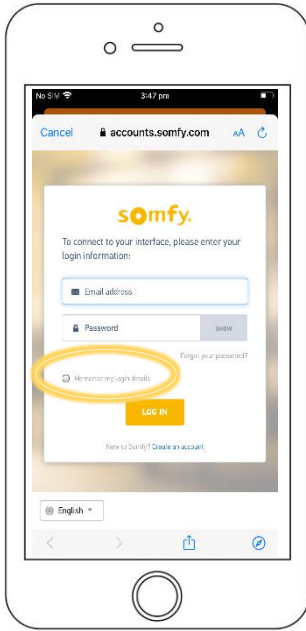
Note: Each Connexoon Window RTS device can have a maximum of 8 scenes (4 Modes and 4 Ambiances). Set-up of your scenes can only be done within the Connexoon Window RTS app.



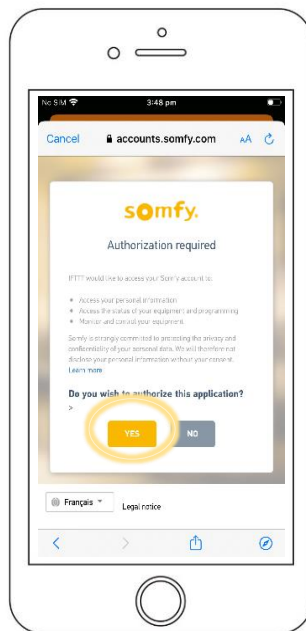
- 1 Open **IFTTT** app.
- 2 Select **Get More**.
- 3 Select the **Search** field box.
- 4 Type "**Launch Connexoon Scenario**".
- 5 Select **Ask Amazon Alexa to launch your Connexoon scenario 1**.
- 6 Select **Connect**.



- 6 Enter your **Connexoon Window RTS username & password**.
- 7 Select **Memorize my login details**, then select **LOG IN**.

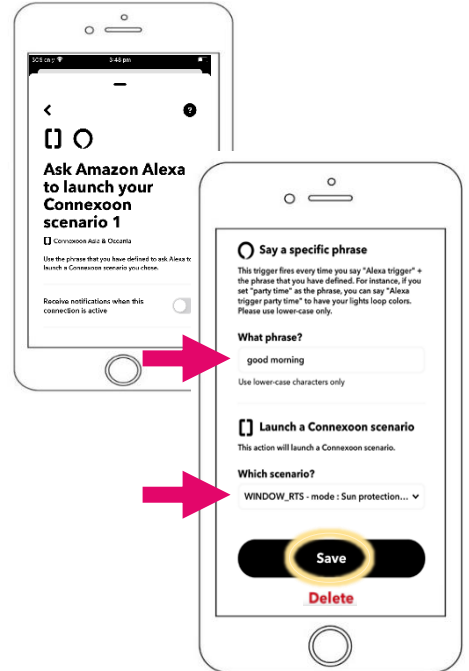


- 8 Select **YES**.
- The IFTTT app will automatically link all Modes & Ambiances programmed in your Connexoon Window RTS app.



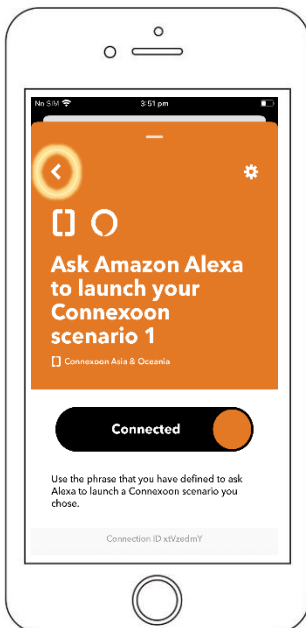
- 9 Scroll down and update the **phrase** which will launch the scene or ambiance.
- 10 Select the **Connexoon Window RTS scene or ambiance** to be launched.

Click **Save**.

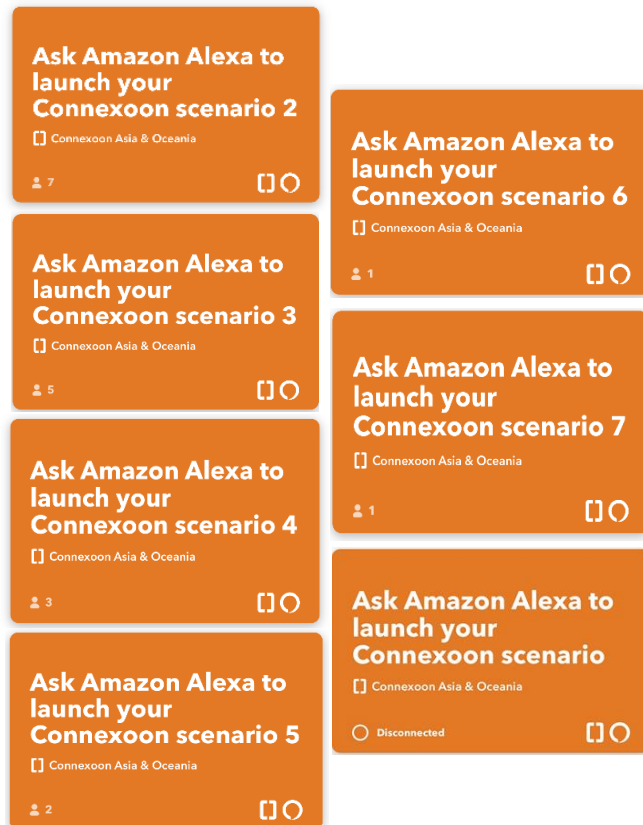


- 11 First Complimentary Somfy Applet is now connected & Set up.

Select **back arrow**.



- 12 Repeat steps 5 – 11 for remaining 7 Connexoon Scenarios.



About Somfy

Somfy's leading smart solutions for homes and buildings have been improving people's daily lives for over 50 years. Developed with comfort, ease of use, security and sustainability in mind, our innovations automate and connect interior and exterior window coverings, awnings and pergolas. We are committed to creating useful solutions that are accessible to all, designed for today and beyond.


Somfy Pty Limited Australia


Toll Free 1800 076 639
t: 02 8845 7200
e: somfy.au@somfy.com


New Zealand

Toll Free 0800 276 639
e: somfy.nz@somfy.com

somfy.com.au
somfy.co.nz

 Find us on Facebook

 Follow us on Instagram

 Subscribe to us on YouTube

 Follow us on Pinterest

A BRAND OF **SOMFY** GROUP

somfy®