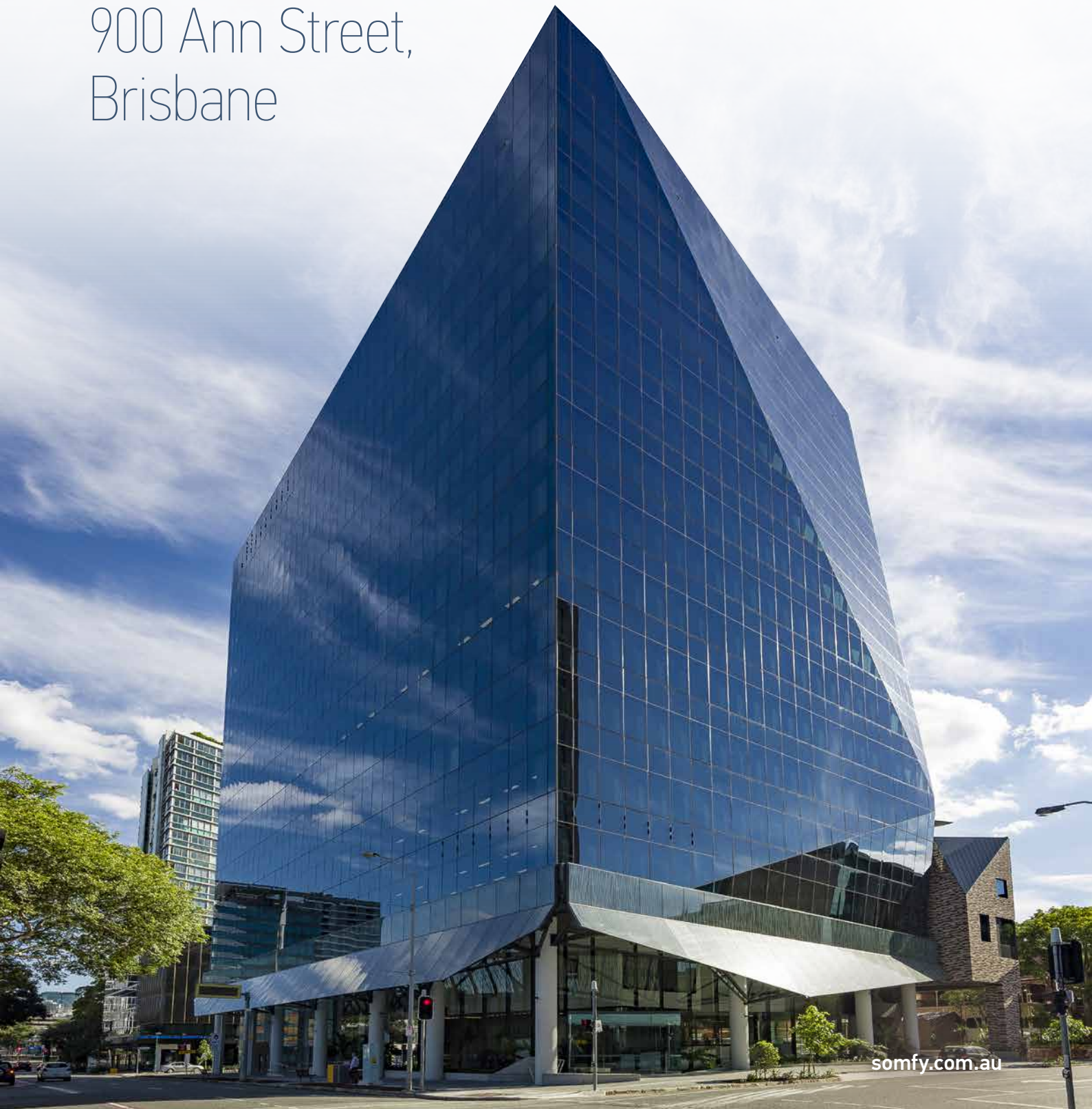


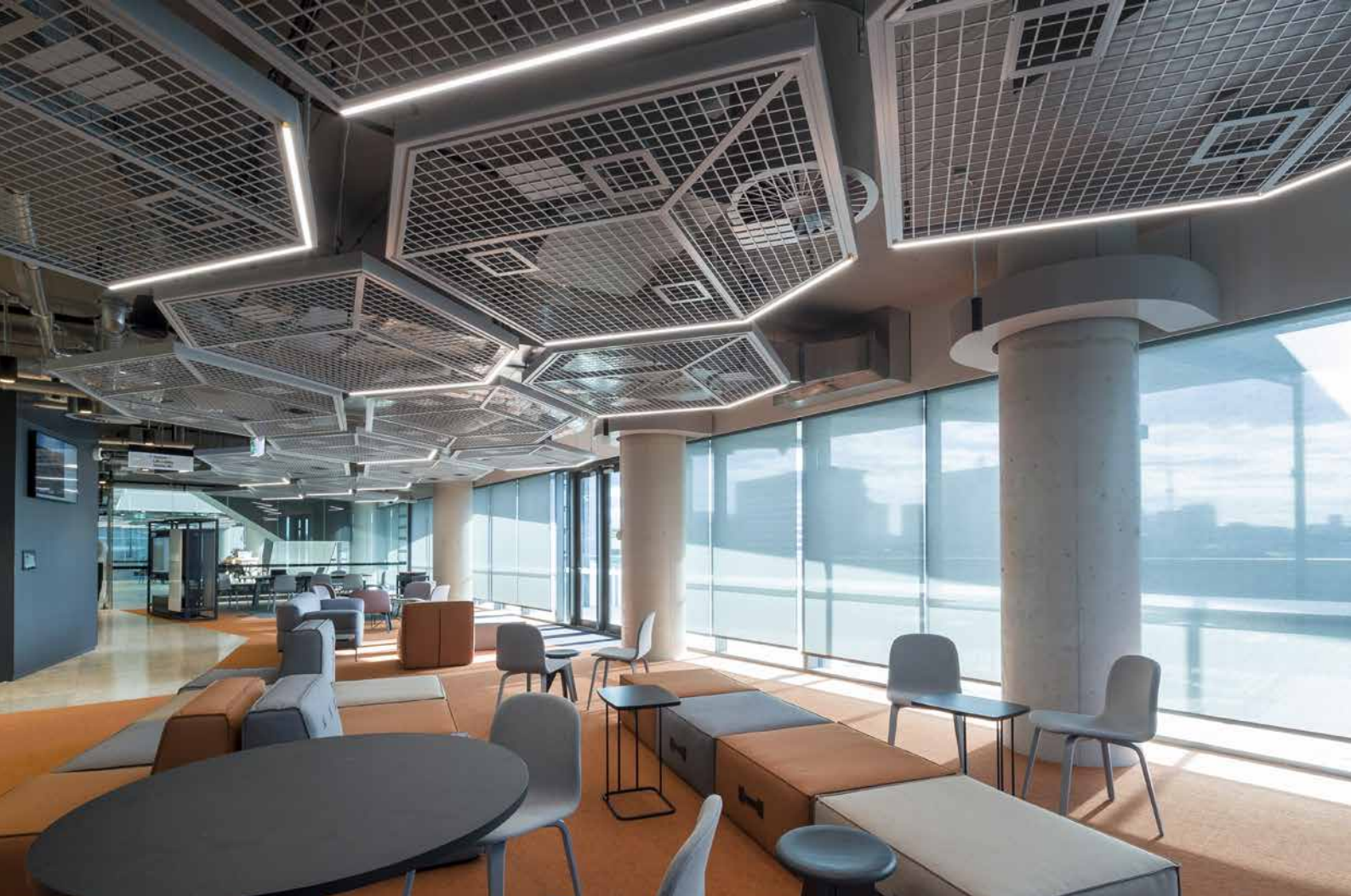
CASE STUDY

Aurizon HQ

900 Ann Street,
Brisbane



somfy.com.au



Somfy – your partner in every phase of the project



Specification

Somfy can assist during the planning stages for a more professional and considered approach. Somfy's Project and Services experts provide the support you need to meet the requirements of each project and make sure that every solution is correctly specified.



Commissioning

Somfy offers a range of services depending on your project location and size. Our Projects and Services team, including Somfy Electrical Services, a specialist electrical contractor for solar shading installation, supports projects with electrical installation, project commissioning and/or project management.



After-Sales Support

Somfy offers one-off troubleshooting, visits to adjust/optimize settings and check functionality and ongoing maintenance agreements in order to give the solution a long lifespan and optimum performance.

Somfy's superior performance adds comfort and energy efficiency to Aurizon HQ

The construction of the new corporate headquarters for Aurizon, Australia's largest rail freight operator at 900 Ann Street in Brisbane's Fortitude Valley, resulted in a 15 level A-Grade, 5 Star NABERS and 5 Star Green Star rated building. It features a striking appearance both outside and inside and a truly integrated fit-out. The distinctive design includes a 10-storey atrium stretching between levels 5 and 15, which presents novel technical requirements in terms of mechanical design, environmental impacts and operational considerations for the owner.

The shading system designed in collaboration with Somfy for this project ensures comfort levels of all occupants with the provision of a view and minimal solar glare contributing to their health and wellbeing, all while maximising the building's overall energy efficiency.

Approximately 600 Somfy Sonesse 40 WT motors were used in the project; selected as the motor of choice for its superior performance and quiet operation. Combined with Somfy animeo IB+ Touch Building Controllers – the first large scale project of its kind in Australia entails a system controlling every 2-3 floors and sun sensors positioned on the roof, enabling window coverings to function automatically.

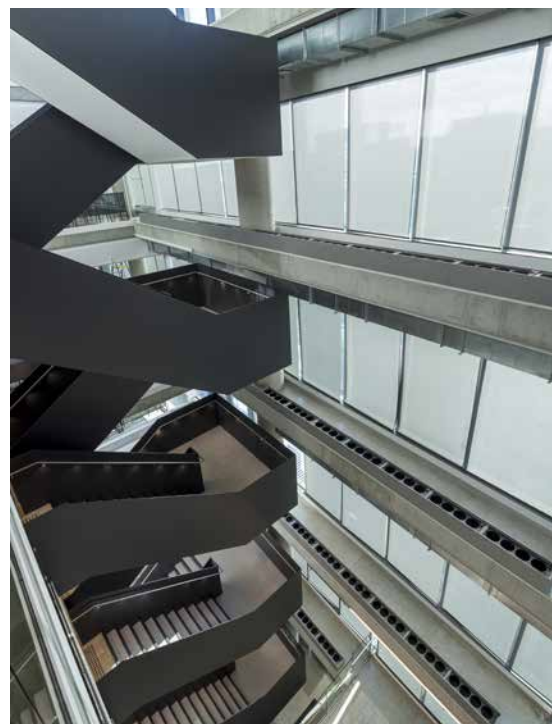
Meanwhile individual control is made possible via Smoove Wall Mounted controls, providing the occupants with convenient local control.

The Sonesse powered roller blinds were manufactured by Vertilux, partnered by Greg Wildman Industries to ensure the window coverings were seamlessly integrated into the project, with iconic Australian architect, John Wardle designing the building.

Somfy provided support at every stage of the process, with its Projects team and Somfy Electrical Services team commissioning the project to ensure the products offer the very best performance in this high-profile building.

"Throughout the entire design and development phase of this project, the Somfy team has been by my side. From design meetings with clients, architects and builders, to the tendering process, installation and programming of the Somfy animeo IB+ Touch Building Control system. The Somfy Electrical Services team was a great support and ensured the project ran seamlessly," said Greg Wildman.

The Somfy animeo IB+ Touch Building Controller allows for improved visual and thermal comfort for the tenants, as well as an increased level of control with the available remote control option.



The Sonesse quiet range of quiet motors is recognised throughout the industry for meeting the needs of even the most high-performance project. Somfy Sonesse motors are available to suit all interior shading applications.

Quiet, adaptable and intuitive, Sonesse motors are designed for all types of projects from commercial to residential, including new builds and renovations.

Project details

Location:

Fortitude Valley, Queensland

Type of Building:

Commercial Office 19,000m²

Owners:

Consolidated Properties Group & Charter Hall

Architect:

John Wardle Architects

Certification:

5 Star NABERS, 5 Star Green Star

Commissioning:

Somfy Electrical Services

Somfy Solutions:

600 Sonesse 40 WT motors, 6 animeo IB+ Touch Building Controllers, sun sensors and Smoove wall-mounted controls

Manufacturer:

Vertilux

Installer:

Greg Wildman from Greg Wildman Industries

Builder:

Hutchinson Builders



Australia

Toll Free 1800 0 SOMFY

T: 02 8845 7200

E: somfy.au@somfy.com

New Zealand

Toll Free 0800 2 SOMFY

E: somfy.nz@somfy.com

somfy.com.au

somfy.com.au/projects

somfypro.com.au

Follow us

