



**Make the move**  
to better living

**somfy®**





## Contents

<b>Experience a truly connected home with Somfy</b>	<b>5</b>
<b>Enjoy the freedom of smart shading</b>	<b>7</b>
<b>Interior window solutions</b>	<b>8</b>
Interior blinds and curtains	9
WireFree motorisation	10
<b>Exterior window solutions</b>	<b>12</b>
External Venetian blinds	13
Vertical screens	15
Roller shutters	16
<b>Outdoor living solutions</b>	<b>18</b>
Awnings	19
Pergolas	22
<b>Connected home</b>	<b>25</b>
TaHoma® switch	25
Somfy Smart Shading on Zigbee 3.0	26
Remote controls	28
Wall mounted controls	29
Sun and wind sensors	29
<b>Somfy, inspiring a better way of living</b>	<b>31</b>
Somfy technology and guarantee	31





# Experience a truly connected home with Somfy

## Connected Home

Imagine closing the blinds in your bedroom each night at the touch of a button and being woken by gentle sunlight in the morning, at a scheduled time that suits you.

Enjoy the complete smart home experience with hands-free control using voice control with Google Nest, Amazon Echo, and Apple HomeKit\*. Watch your home spring into action without having to lift a finger.

## Home Protection

When you leave home, you no longer need to remember to close all the blinds or retract your awning, thanks to Somfy's timers and sensors.

Relax and ensure peace of mind while on holiday with presence simulation and the ability to control your window coverings from wherever you are in the world, right from your smartphone.

## Energy Savings

Heat and cool your home naturally with motorised window coverings. Utilise schedules or sensors to keep the heat out in summer and let the warmth in during winter, and reduce the pressure on your heating and cooling systems all-year round!

For radio technology that's easy to live with



### 100% wireless

Limited structural work



### 100% compatible

Control all devices with one remote control or your smart device



### 100% upgradeable

Renovate or modernise at your own speed to suit your needs and your budget

\*where applicable with selected Zigbee technology.





With Somfy's range of automation solutions for window coverings, the luxury of controlling your blinds or awnings from wherever you are in the world is possible.

## Enjoy a **better way of living** with Somfy's range of motorised window covering solutions for inside and outside the home

Add a touch of luxury and sophistication to any home with our internal motor range for **internal blinds** and **curtains**.

Improve your home's security, privacy, sound insulation and energy efficiency with Somfy's external automated solutions for **external venetian blinds**, **roller shutters** and **exterior vertical screens**.

Extend your home and enjoy the modern home's 'outdoor room' with our **awning** and **pergola** motorisation solutions.

Somfy's range of internal and external motorisation solutions are suitable for a new build or renovation and can also be fitted to most existing windows. Our intelligent, quiet motors and electric controls can be adjusted via discreet wall mounted units, remote controls, from your smartphone or using voice control. Internal and external lighting can also be controlled with this system.

The flexibility of Somfy's solutions allows you to set your window coverings to automatically open or close via timers and schedules, or using sun, wind and temperature sensors to automatically adjust your window coverings according to the weather. With the latest available technology, consider installing sun or wind sensors which will automatically adjust your chosen window covering if the weather turns.

➤ **Speak to your Somfy Expert retailer to find out how our products will bring you flexibility, peace of mind and will take your home into the future.**





A connected world  
inside your home

Interior window solutions

Before adding motorisation — what is the best product for you?

My priorities	Curtains	Venetian blinds	Roller blinds	Roman blinds / pleated blinds
Privacy	★★★★	★★★★	★★★★	★★★★
Shading	★★★★★	★★★	★★★★★	★★★★
Managing natural light	★★★	★★★★★	★★★★	★★★
Thermal protection	★★★★	★★★	★★★	★★★



Interior blinds and curtains

Live in comfort and enjoy the elegance of interior blinds and curtains, powered by Somfy.

Create an interior that reflects your personality and let Somfy do the hard work for you. Automating control of your blinds or curtains is the simplest way to change how you use your space; quite simply, it changes how you live. Play with natural light, and create your own ambiances to achieve privacy, peace and tranquility.

Whatever your design preference — curtains, Venetian blinds, roller blinds, roman (or pleated) blinds — Somfy has an automated solution right for you.

Motorisation means no hanging cords, so you're free to relax in a child-friendly and pet-safe setting.

Additionally, you can unwind and enjoy perfect peace and quiet with our silent range of Sonesse motors.

Indulge in the sophistication of adjusting your blinds and curtains using a remote, smartphone or voice control. The next generation of easy living is available with Somfy.





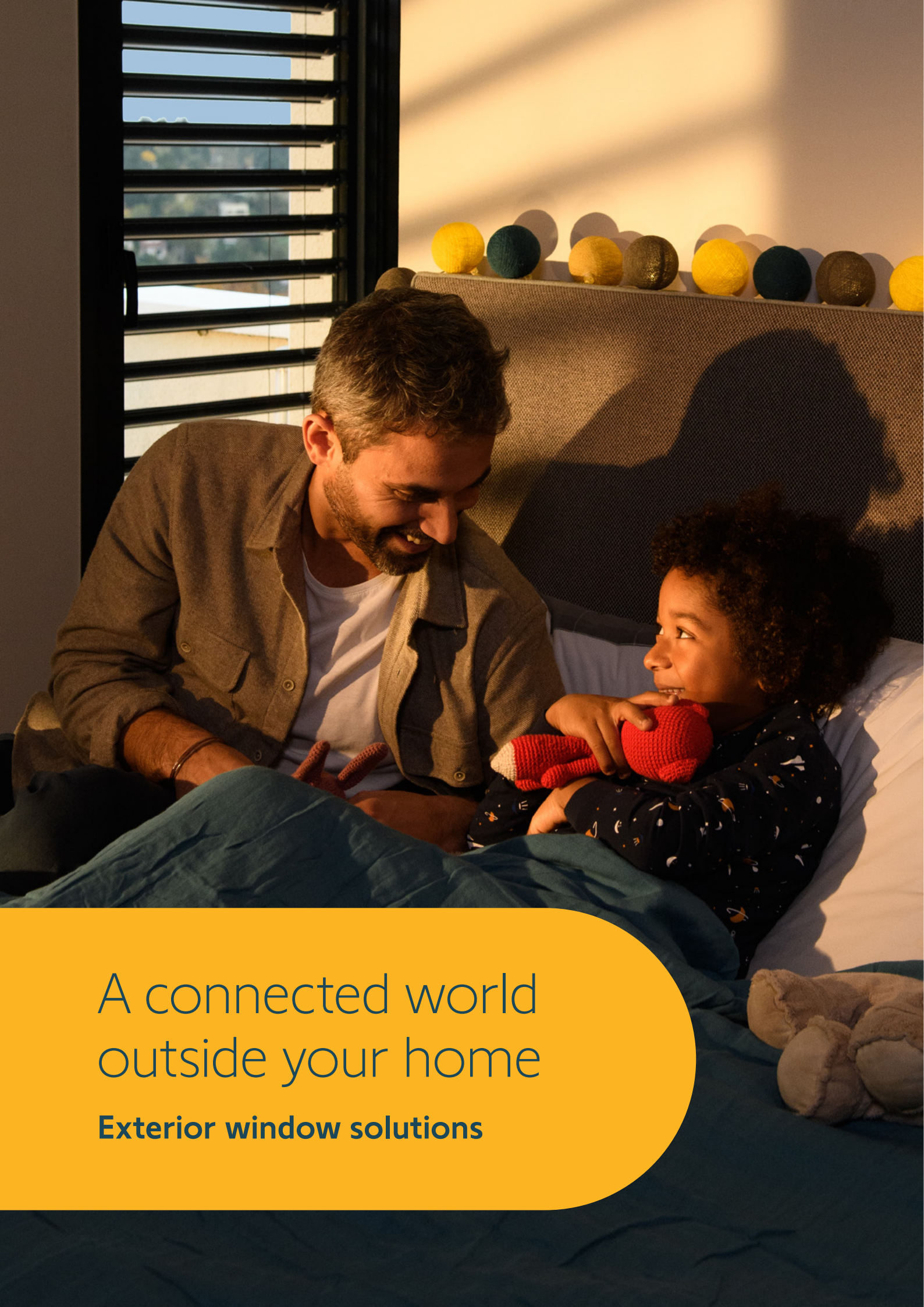
Open your home up to unlimited possibilities with our innovative **WireFree** motorisation options. With no need for a hardwired connection, you have the freedom to create, relax and connect with our battery-operated solutions.

Benefits

- **Automation can be applied to existing window coverings** or can be customised for a new home
- **Provide immeasurable flexibility** in terms of privacy, design, shading, thermal protection, UV protection and managing natural light
- **Protected** — if someone inadvertently attempts to close or open a curtain manually, the automatic override function kicks in
- Contribute to **reducing heating or cooling** costs
- **No need for unsightly and hazardous cords and chains** as is the case with a manual system
- **Operate quietly and smoothly**
- **Option to use WireFree motors** with built-in premium Lithium-ion batteries
- **Compatible with an interior sun sensor** which can 'wake up' the house
- Can be operated by **remote control**, via the **TaHoma® switch hub** or app or with **voice control**







A connected world  
outside your home

**Exterior window solutions**

Before adding motorisation — what is the best product for you?

My priorities	External venetian blinds	Vertical screens	Roller shutters
Security	★★★	★	★★★★
Energy savings	★★★	★★★	★★★★★
Sound insulation	★★★★	★	★★★★★
Shading	★★★	★★★	★★★★
Transparency / control of natural light	★★★	★★	★★



External venetian blinds

Play with natural light using external venetian blinds.

Say goodbye to glare, with the ability to precisely adjust the slats on your external venetians to let in as much, or as little sunlight as you choose.

External venetian blinds bring a feeling of luxury and sophistication to any home. Introduce sunshine while still maintaining privacy and change the way you live in your home.

There is a large variety of external venetians to choose from: flat or rounded, wide or narrow, aluminium or wood. The style of slat is chosen for aesthetics but also for performance. These choices directly influence the performance of your venetians and affect glare reduction, lighting, and help to optimise shade or wind tolerance. These factors all contribute to how energy efficient your home can be and you will be surprised at the positive impact on your heating and cooling costs.


Ask your Somfy Expert retailer about which external venetian blinds will best suit your lifestyle.



Benefits

- Give the greatest ability to **control natural light**
- Can be set to a **pre-programmed ‘favourite position’** with the push of a button
- Available in a **variety of different shades** to suit every façade
- **Can be fitted with a wind sensor** which will fully retract the blind position if it becomes too windy
- **Compatible with a sun sensor** which will automatically adjust the slats to reduce or increase the indoor temperature and light level
- Can be operated by **remote control**, via the **TaHoma® switch hub** or app or with **voice control**





External screens  
give your home  
shade and  
greater privacy.



## Vertical screens

As we embrace an open plan lifestyle, the line between indoors and out becomes less defined. Extend your home the easy way with exterior vertical screens.

Vertical screens are not only great for covering your windows, but can be utilised to transform your outdoor space into an outdoor room, protected from the external elements including weather and insects.

The benefit of external screens is that they stop the heat and cold from entering your home before they reach your windows.

### Benefits

- **Visually appealing** and add sophistication to any home
- **Available with or without a headbox**
- **Smart obstacle detection** — they will stop automatically if an obstacle is detected
- **Auto learning function** to ensure fabric self tensioning, protect the fabric and ensure high quality finish
- **Remove the need for handles, chains or cords** with manual override feature on CSI motors
- **Can be fitted with a sun sensor** and will close automatically if the sunlight becomes strong
- **Also compatible with a wind sensor** that automatically raises the vertical screen in strong winds to prevent the fabric tearing
- Can be operated by **remote control**, via the **TaHoma® switch hub** or app or with **voice control**





## Roller shutters

Roller shutters provide excellent security, privacy and shade, and reduce external noise, making them an excellent choice for today's busy urban living or for the home which is exposed to the elements.

There are many different types of roller shutters. The choice of slat type, slat size and material will depend on your priorities — talk to your Somfy Expert retailer about which is best for your home in terms of security, noise reduction and energy efficiency.

If your home is already fitted with handle-operated roller shutters these can be motorised.

### Benefits

- **Smart obstacle detection** — they will stop automatically if an obstacle is detected, including frost when used with rigid links
- **Settings are automatically maintained** so that the shutter opens and closes perfectly every time
- **Tamper resistant when lowered** and security can be further enhanced by fitting the roller shutter with rigid links which provide up to 100 kg resistance to lifting
- **Improve energy efficiency** by keeping your house cool in summer and warm in winter – heat and cold is stopped before it reaches your window.
- **Available in a range of different colours** to suit every façade
- Can be operated by **remote control**, via the **TaHoma® switch hub** or app or with **voice control**

Enjoy comfort, insulation and security with motorised roller shutters.







Live the indoor life  
outdoors

Outdoor living solutions

Before adding motorisation — what is the best product for you?

My priorities	Awning	Pergola
Space	Open	Open or closed
Somfy compatible equipment	Lighting Sensors Roller pelmet	Lighting Sensors Vertical screens
Type of protection	Sun Rain	Sun Rain and wind Privacy



Awnings

Take full advantage of your outdoor space all year-round with a Somfy-motorised awning.

Enjoy the flexibility of temporary protection from the sun without the commitment or cost of a permanent structure. Combine the sleek and attractive aesthetic of an awning with the ability to expand or retract at the touch of a button.

Awnings are available in a seemingly endless array of fabrics and there are many options to prioritise — weather-proofing, UV-resistance, strength, durability, shade provision and aesthetics all come into play. Awnings come in three styles — Folding arm awning, Semi-cassette awning and Full-cassette awning.

To enjoy your evenings outdoors, lighting and heating can also be incorporated with the ability to be turned on and off via remote control, and can also be set to a timer. Lighting can also be incorporated into gardens or paths, making the space even more versatile.

Your Somfy Expert retailer will help you make the right choice for your outdoor space.

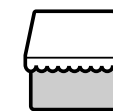






Bring new life to your outdoor space with the flexibility of a motorised awning.

## What to choose



### Folding arm awning

The frame and fabric of your awning stay in the open air once the awning is rolled up.



### Semi-cassette awning

The fabric of your awning is rolled into a case, giving better protection from the weather. The arms stay outside.



### Cassette awning

Fully concealed cassette housing provides complete protection for the awning mechanism, arms and fabric of the awning.

## Benefits

- **Controlled at the touch of a button**
- **Can be used with a sun sensor** to automatically extend when the sun comes out
- **Compatible with a wind sensor** to retract automatically if it becomes windy
- **Available in countless fabrics**
- **Can incorporate lighting control** in the awning and garden
- **Extend the life of the fabric inside** the cassette by the motor slightly 'releasing' the fabric when it closes
- **Possesses a 'soft close' function** to preserve the mechanism
- Can be operated by **remote control**, via the **TaHoma® switch hub** or app or with **voice control**





## Pergolas

Pergolas and fabric roof systems transform backyards by creating an 'outdoor room' — an entertaining space that becomes an extension of your home and lifestyle. Our motorised solutions will allow you to enjoy your outdoor space all year-round.

Pergolas are easy to install, less costly than a verandah and are stronger than a retractable folding arm awning. They offer flexibility and can be customised to suit virtually any outdoor space — often viewed as a new level of luxury in outdoor living.

Pergolas can include a retractable fabric roof system, an opening louvre system and the addition of straight drop screens which act as walls for added luxury and comfort. Add remote controlled lighting to the pergola, garden or pool and you have created an entertainer's paradise.

Your Somfy Expert retailer will share all the options for a pergola with you and help you to create your own outdoor oasis.

### Benefits

- **Can be used with a sun sensor** to automatically close vertical blinds on the pergola when the sun becomes strong to protect plants or outdoor furniture
- **Compatible with a wind sensor** to retract automatically if it becomes windy
- **Can incorporate lighting and heating control** in the pergola, garden or pool
- **Close neatly and smoothly** to preserve the mechanism and the fabric
- Can be operated by **remote control**, via the **TaHoma® switch hub** or app or with **voice control**

Transform the way  
you live with your  
own outdoor oasis.



Make the most  
of your home

A world of possibilities  
is opening to you

## Control your home the **smart way** with Somfy

Installing motorised blinds, curtains, roller shutters and awnings is the first step to making life at home more comfortable and convenient. By adding a touch of connectivity, TaHoma® switch frees you from repetitive, mundane tasks and adds new features to your home.

### Create your own routines and launch them in one touch

TaHoma® switch is a smart control, offering 2 personalised scene launcher buttons to centralise your smart home products.

Customise each button according to your devices to create scenes that fit your daily routines.

### 3 ways to control your solutions

#### > With the smart control

Launch your daily routines in one touch, directly from the TaHoma® switch hub.

#### > With the TaHoma® by Somfy app

Program and control your devices from home, away or automatically.

#### > With a voice assistant

Go hands-free with voice control using your Google Assistant, Amazon Alexa or Siri\*.

### The most complete smart home solution: open and scalable

Compatible with close to 300 types of Somfy products and smart home partners to connect your window coverings, lights, cameras, alarms, heating and cooling, sensors, music and more!



Your home is now upgraded,  
and your life has never  
been so easy!

\*where applicable with selected Zigbee equipment.



# Take the comfort of your home to the next level with the convenience of **Somfy Smart shading**

Motorised blinds are one of the first steps to making life at home more comfortable and convenient.

Somfy's Smart Shading ecosystem features **Zigbee 3.0 technology**, the open global standard for communication and connectivity in the home.

## **Open & Forward-Looking**

Zigbee 3.0 is an open protocol that offers greater flexibility and a guarantee that certified products are compatible with one another — Zigbee 3.0 is the protocol that's ready for the future.

## **Bi-directional Feedback**

Achieve real-time knowledge of equipment status and battery level from anywhere! Zigbee 3.0 provides users with peace of mind, thanks to the ability to check whether blinds are open or closed, even when away from home.

## **Reliability**

Zigbee 3.0 technology can recover a network, extend radio range, avoid interferences from other devices during installation and operation, optimise battery life and offer a higher level of security — Zigbee 3.0 creates its own in-home ecosystem.

## **Aesthetic Integration**

To fully integrate in the blind design and reduce light gaps, we offer a discreet motor design with colour coordinated motor covers for an almost invisible solution.

## **Convenient and Smart**

All WireFree motors include USB-C fast charge for an optimised charging experience. Harness solar energy with the WireFree Solar Panel for longer lasting and low maintenance charging.

Control your equipment through TaHoma® switch, TaHoma by Somfy app, Ysia remote range or voice control. To enhance your experience, new devices and equipment can be added to match your lifestyle thanks to an interoperable and scalable smart home solution.





# Remote controls

Functionality is in the palm of your hand with Somfy remote controls.



### Ysia Zigbee

- Available in 1 & 5 channel versions to control one or multiple window coverings
- Featuring Zigbee 3.0 technology for control of motorised Zigbee products
- Use “my” button for quick access to your preferred position



Pure



### Ysia Zigbee Variation

- Available in 5 channel version for control of multiple window coverings
- Featuring Zigbee 3.0 technology for control of motorised Zigbee products
- Specifically for any type of blinds with a tilting blade, the innovative scroll wheel allows you to adjust slats, such as those on a Venetian blind, precisely and swiftly



Pure



### Situlo RTS II

- Available in 1, 2 and 5 channel versions to control one or multiple window coverings
- Use “my” button for quick access to your preferred position
- Available in Soliris version (Pure 1 & 5 channels only), for control of sun sensors



Pure



### Situlo Variation RTS II

- Available in 1 and 5 channel versions to control one or multiple window coverings
- Specifically for any type of blind with a tilting blade, the innovative scroll wheel allows you to adjust slats, such as those on a Venetian blind, precisely and swiftly
- Available in Soliris version, for control of sun sensor (Pure 1 channel version only)



Pure



Iron



### Telis 16 RTS

- With 16 channels, you can assign a different function to each channel, using a name, icon or number for easy operation. Close a single blind or activate a suite of functions at the touch of a button
- Intuitive programming



Pure



Silver



### Telis 6 Chronis

- With six channels, you can assign a different function or scenario to each channel, to close a single screen or suite of functions with just one touch of a button
- Different functions or a suite of functions can be controlled with the automatic timer, with different days programmed to different scenarios



Pure



Silver

# Wall mounted controls

Install a wall-mounted switch for room-by-room control. The Smoove wall mounted control is available in three finishes for the display screen with contemporary frame colours to suit any décor.



### Smoove 1

Operates all RTS roller shutters, internal or external vertical screens, blinds and awnings



### Smoove 2

Two channels to control multiple RTS solutions



### Smoove 4

Four channels to control multiple RTS solutions



Pure



Silver



Black



# Sun and wind sensors

Sensors give your home a life of its own. Sun sensors will automatically lower your shutters or screens when the level of sunlight increases, to help keep your home cool, and a wind sensor will retract your awning if it gets too windy or will raise external screens to prevent the fabric tearing. Sensors are available for all motorised products.



### Eolis RTS

Wind sensor to automatically retract your external screens or awnings



### Eolis 3D WireFree

100% wireless wind sensor for external folding arm awnings



### Soliris RTS

Automatic sun and wind sensor to extend your product’s lifespan



### Sunis RTS

Sun sensor to automatically extend your awning or lower your external screen





Each day, 400 Somfy engineers work towards increasing the comfort, safety and functionality of our homes.

# Somfy, inspiring a better way of living

Our dedicated team registers more than 40 patents each year as we strive to bring the technology of tomorrow into your home, today.

Somfy is the leading global manufacturer of intelligent quiet motors, electronic controls and home automation solutions for interior and exterior window coverings.

For over 50 years, Somfy engineers have designed solutions for both the residential and commercial markets to motorise window coverings such as blinds, curtains, awnings and roller shutters.



## Guarantee

All Somfy branded products, including the motor operating life and automatic controllers, are thoroughly tested under extreme conditions to guarantee durability for five years.







All information subject to change. © Somfy Pty Limited Australia, June 2025. Colours shown are as close as possible to the actual finished products. Please note, due to the limitations of the printing process, printed colours may not represent the true colour. Always confirm your colour choice with your Somfy Expert retailer. Printed on Monza Recycled – a 100% recycled fibre which is FSC® Mix Certified, which ensures that pulp is derived from well-managed forests and recycled wood of fibre. Monza Recycled is manufactured by an ISO 14001 certified mill.



### About Somfy

For more than 50 years, Somfy has been driving durable positive motion as a pioneer in window covering automation. Developed with comfort, ease of use, security and sustainability in mind, our seamless and connected solutions are designed to help people make the move to living spaces impactful for humans and with a reduced impact on nature.

A BRAND OF **SOMFY** GROUP

Somfy Pty Limited Australia  
Toll Free 1800 076 639 / T 02 8845 7200  
[somfy.au@somfy.com](mailto:somfy.au@somfy.com)  
[somfy.com.au](http://somfy.com.au)

New Zealand  
Toll Free 0800 276 639  
[somfy.nz@somfy.com](mailto:somfy.nz@somfy.com)  
[somfy.co.nz](http://somfy.co.nz)