



B2B SOLUTIONS 2025

Installer's Guide

—

Somfy
Smart Shading
Standalone
Commissioning

somfy[®]

Summary

Smart Shading Motors

Motor LED behaviours	02
Motor program button	02

Ysia Control

Navigating the Ysia control	03
Controlling a motor or group with Ysia	03
Ysia control LED behaviours	04
Ysia control battery compartment	04

Smart Shading Commissioning

Considerations for Smart Shading commissioning	05
--	----

Setting Motor End Limits

Setting motor limits and binding the Ysia control	06
Setting motor limits and detaching the Ysia control	08
Setting motor end limits process flowchart	10

Binding an Ysia Control

Binding an Ysia control to a motor with existing end limits	11
Binding an Ysia control process flowchart	12

Adjusting Motor Settings

Adjusting motor end limits	13
Adjusting motor rotation	15
Adjusting motor settings process flowchart	17

Setting the 'my' Favourite Position on a Motor

Setting the 'my' favourite position flow chart	19
--	----

Setting a Group Channel(s)

Copy/paste motors to a group channel	20
Copy/paste motors to a group channel process flow	21
Pairing 2 or more motors to an Ysia 1 control	22
Pairing 2 or more motors to an Ysia 1 control process flow	24

Setting Curtain End Limits

Setting end limits on a Glydea Ultra + Zigbee module and binding an Ysia control	25
Setting end limits on a Glydea Ultra + Zigbee module process flowchart	27
Adding a Glydea Zigbee module to a Glydea RTS curtain motor with existing end limits and then binding an Ysia control	28
Adding a Glydea Zigbee module to a Glydea RTS curtain motor with existing end limits and then binding an Ysia control process flowchart	29

TaHoma switch & Zigbee

TaHoma switch & mesh network set-up considerations	30
Navigating the TaHoma by Somfy application	31


TaHoma switch Set Up

Launch TaHoma by Somfy application and create a profile	32
Connect the TaHoma switch to power	32
Connect the TaHoma switch to the internet	33
Create a TaHoma account or log in	33
Adding Smart Shading actuators	34
Adding Ysia controls	35
Binding Ysia controls to Smart Shading equipment	36
Setting up the scenario launchers on the top of the hub	37
Troubleshooting tips when pairing Smart Shading equipment to a TaHoma switch	38

Steps to Factory Reset Smart Shading Equipment

Smart Shading Motors

LED Behaviours

LED Colour	LED Behaviour	Explanation	Motor Type
	Static on	The charger is plugged in, and the battery is fully charged.	Zigbee WireFree Li-ion
	Static for 2 seconds	The power is on/motor is awake.	Zigbee WireFree Li-ion Zigbee Wired
	Blinking [0.1s On – 0.4s Off]	The charger is plugged in, and the battery is charging.	Zigbee WireFree Li-ion
	Flashed Once	An order was received from a bound control.	Zigbee WireFree Li-ion Zigbee Wired Zigbee WireFree
	Blinking [1s On – 1s Off]	The motor is trying to join a network.	Zigbee WireFree Li-ion Zigbee Wired Zigbee WireFree
	Blinking [0.85s On – 0.1s Off]	The motor is in programming mode.	Zigbee WireFree Li-ion Zigbee Wired Zigbee WireFree
	Blinking [1s On – 1s off x 3 times]	The motor cannot move [thermal protection, obstacle detection etc], check app for more details.	Zigbee WireFree Li-ion Zigbee Wired Zigbee WireFree
	Flashing once	An order was received from a control. The motor can move, but the current position is out of limits.	Zigbee WireFree Li-ion Zigbee Wired Zigbee WireFree
	Flashing 3 times [upon movement order]	An order was received from a bound control and the battery is low.	Zigbee WireFree Li-ion Zigbee WireFree

Program Button

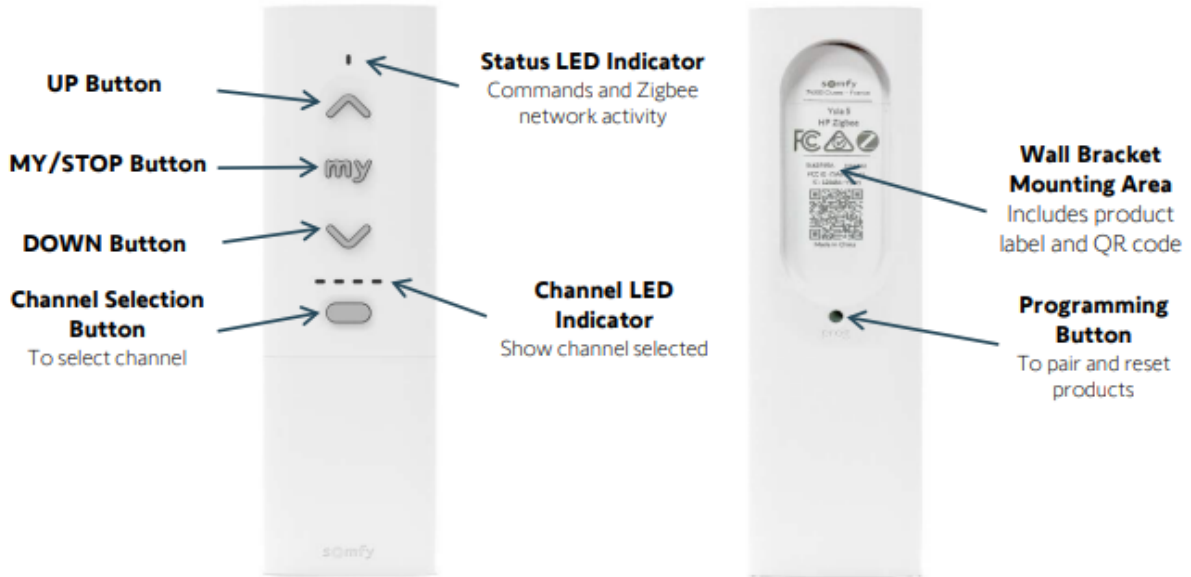
Press and hold the program button:

- **1 Jog:** Motor is in programming mode.
- **2 Jogs:** Motor is detached from a mesh network; programmed end limits remain; motor is in discovery mode.
- **3 Jogs:** Motor is factory reset.
- **4 Jogs:** Motor software will restart (please allow up to 5 minutes for the restart to complete).

WARNING: If the program button on the motor head is held for more than 20 seconds, the motor will go into recovery mode and cannot be recovered or used.

Ysia Control

Navigating the Ysia Control



Controlling a Motor or Group with Ysia

UP Button:

Used to raise, open or tilt

- **Short Press:** Sends motor to the upper limit/open position
- **Long Press:** Moves tilting motors up, release to stop

NOTE: PRESS & HOLD for desired length of travel.

MY/STOP Button:

Used to stop motor movement or move to previously saved 'my' position

- **Single Press:** Stops the motor during movement
- **Quick Double Press:** Moves motor to 'my' position

DOWN Button:

Used to lower, close, or tilt









- **Short Press:** Sends motor to the lower limit/closed position
- **Long Press:** Moves tilting motors down, release to stop

NOTE: PRESS & HOLD for desired length of travel.



Ysia Control

Smart Shading Ysia Control LED Behaviours

LED INDICATORS	LED OPERATION	LED TYPE	INDICATION
STATUS LED: 	 Blinking (GREEN)	VERIFICATION	Remote is sending a command
	 Solid (GREEN)	VERIFICATION	Confirmation of setting applied to the motor
	 Quick Blinking (AMBER)	SETTING	Remote in Setting Mode with a paired motor
	 Blinking (AMBER)	SETTING	Remote is in scanning mode in a Somfy Zigbee solution - polling to pair motors
	 Blinks 3 times (RED)	WARNING	Error with setting or sending a command <i>NOTE: Check for low battery level in the remote</i>
CHANNEL LED: 	 Solid (GREEN)	VERIFICATION	Indicate the selected channel <i>NOTE: Channel 5 is indicated by 4 solid channel LEDs.</i>

Ysia Control Battery Compartment

Ysia 1
[1871153]

Ysia 5
[1871154]

Ysia 5 Variation
[1871281]



Smart Shading Commissioning

Considerations for Smart Shading Commissioning

Comissioning Action	Standalone (Motor & Ysia Control Only)	TaHoma pro App
Set motor end limits	✓	✓
Change motor rotation	✓	✓
Set and change 'my' favourite position	✓	✓
Adjust motor end limits	✓	✓
Pair 2 or more motors to 1 channel	✓	✓
Copy/paste motors to a group channel	✓	✓
Bind and detach Ysia controls from a motor without adjusting the end limits	✓	✓
Factory reset motors	✓	✓
Delete 'my' favourite position	x	✓
Change motor speed	x	✓
Adjust soft start/soft stop speed	x	✓
Turn off soft start/soft stop	x	✓
View WireFree battery level	x	✓
Name/personalise the motor name	x	✓
Connect to the motor via Bluetooth	x	✓

- All Somfy Smart Shading tubular motors require a motor plate (sold separately). The motor plate is dependent on the bracket system being used. Refer to somfypro.com.au for details.
- Zigbee 3.0 radio range is 7m (in room). In standalone, each motor(s) + Ysia control has a direct connection. There is no Zigbee mesh network. A mesh network is only created with a main controller (i.e., TaHoma switch home automation system). To extend the Zigbee 3.0 radio range, a TaHoma switch + Somfy trusted repeaters are required.
- In a standalone set up (motor and Ysia controls only), the Ysia remote control cannot be paired with third party Zigbee 3.0 equipment. To control third party Zigbee 3.0 equipment, a TaHoma switch hub is required.
- Apple HomeKit compatibility with Somfy Smart Shading equipment is achievable with a TaHoma switch hub only.
- In standalone commissioning, ensure the motor and Ysia control are within 60cm of each other for an ideal pairing experience.
- Do not rush the process. Watch both the LED on the remote, the motor LED, and jogs to validate your set up.
- Once motor is set, wait up to 15 seconds for the process to complete prior to testing/trying to control the blind.

Setting Motor End Limits

Setting the Motor Limits and Binding the Ysia Control

Pre-start checklist:

- Ensure the motor and Ysia control are factory reset.
- For an ideal pairing experience, ensure the motor and Ysia control are within 60cm of each other (more than 1.5 m apart will impact the pairing experience).
- Do not rush the process. Watch both the LED on the remote, the motor LED, and jogs to validate your set up.
- If you rush, skip a step and/or the equipment doesn't behave as it should, reset both the motor and control and restart the process.
- For AC motors, ensure the motor is plugged in to power. For WireFree motors, ensure the motor has been fully charged.

1

Select the channel on the control

When using a multichannel Ysia control, select the desired channel prior to programming.

If using Ysia 1 Channel, move to step 2.



2

Wake up the motor

Press and hold the **Program** button (approx. 3-5 seconds) on the motor head, until the motor jogs once.

The LED on the motor head will flash orange.



3

Put the Ysia into pairing mode

Ensure the Ysia control is within 60cm of the motor head.

Briefly press (less than 0.5 seconds) **UP & DOWN** on the Ysia control and **wait**. The LED on the control will flash orange. It can take up to 30 seconds for the next step to take effect.



Do not touch or intervene with the equipment during this time.

Setting Motor End Limits

4

Ysia control is successfully paired

When the pairing is successful, the LED on the control will illuminate green. Around 10 seconds later the motor will jog once.



5

Check/change the motor rotation

The LED on the Ysia control will flash orange.

Press and hold **UP** or **DOWN** on the Ysia control to check the motor direction

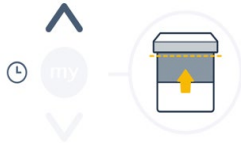


If the direction is correct, move to the next step. If not, press and hold 'my' button until the motor jogs once.

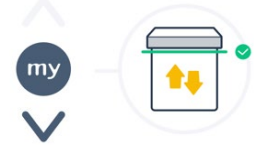
6

Set the upper limit

Press and hold the **UP** button until it reaches the preferred upper limit.



Briefly press (less than 0.5 seconds) 'my' and **DOWN** to set the upper limit.



The motor will jog once.

7

Set the lower limit

Press and hold the **DOWN** button until it reaches the preferred lower limit.



Briefly press (less than 0.5 seconds) 'my' and **UP** to set the lower limit. The motor will jog once.

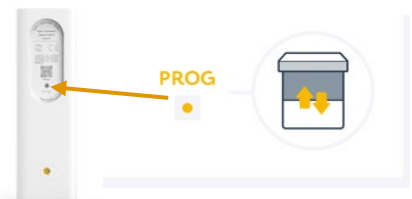


8

Bind the Ysia control to the motor

Briefly press (less than 0.5 seconds) the **Program** button on the back of the Ysia control. The motor will jog once.

The LED on the motor and Ysia control will turn off.



Setting Motor End Limits

Setting the Motor Limits and Detaching the Ysia Control

Pre-start checklist:

- Ensure the motor and Ysia control is factory reset.
- For an ideal pairing experience, ensure the motor and Ysia control are within 60 cm of each other (more than 1.5 m apart will impact the pairing experience).
- Do not rush the process. Watch both the LED on the remote, the motor LED, and jogs to validate your set up.
- If you rush, skip a step and/or the equipment doesn't behave as it should, reset both the motor and control and start the process again.
- For AC motors, ensure the motor is plugged in to power. For WireFree motors, ensure the motor has been fully charged.

1

Select the channel on the control

When using a multichannel Ysia control, select the desired channel prior to programming.

If using Ysia 1 Channel, move to step 2.



2

Wake up the motor

Press and hold the **Program** button (approx. 3-5 seconds) on the motor head, until the motor jogs once.

The LED on the motor head will flash orange.



3

Put the Ysia control into pairing mode

Ensure the Ysia control is within 60cm of the motor head.

Briefly press (less than 0.5 seconds) **UP & DOWN** on the Ysia control and **wait**. The LED on the Ysia control will flash orange. It can take up to 30 seconds for the next step to take effect.

Do not touch or intervene with the equipment during this time.



Setting Motor End Limits

4

Ysia control is successfully paired

When the mesh pairing is successful, the LED on the control will illuminate green. Around 10 seconds later the motor will jog once.



5

Check/change the motor rotation

The LED on the Ysia control will flash orange.

Press and hold **UP** or **DOWN** on the Ysia control to check the motor direction.

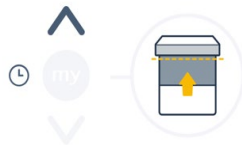
If the direction is correct, move to next step. If incorrect, press and hold 'my' button until the motor jogs once.



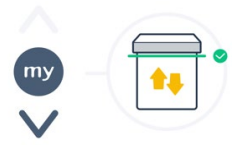
6

Set the upper limit

Press and hold the **UP** button until it reaches the preferred upper limit.



Briefly press (less than 0.5 seconds) 'my' and **DOWN** to set the upper limit.



The motor will jog once.

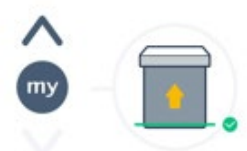
7

Set the lower limit

Press and hold the **DOWN** button until it reaches the preferred lower limit.



Briefly press (less than 0.5 seconds) 'my' and **UP** to set the lower limit. The motor will jog once.



8

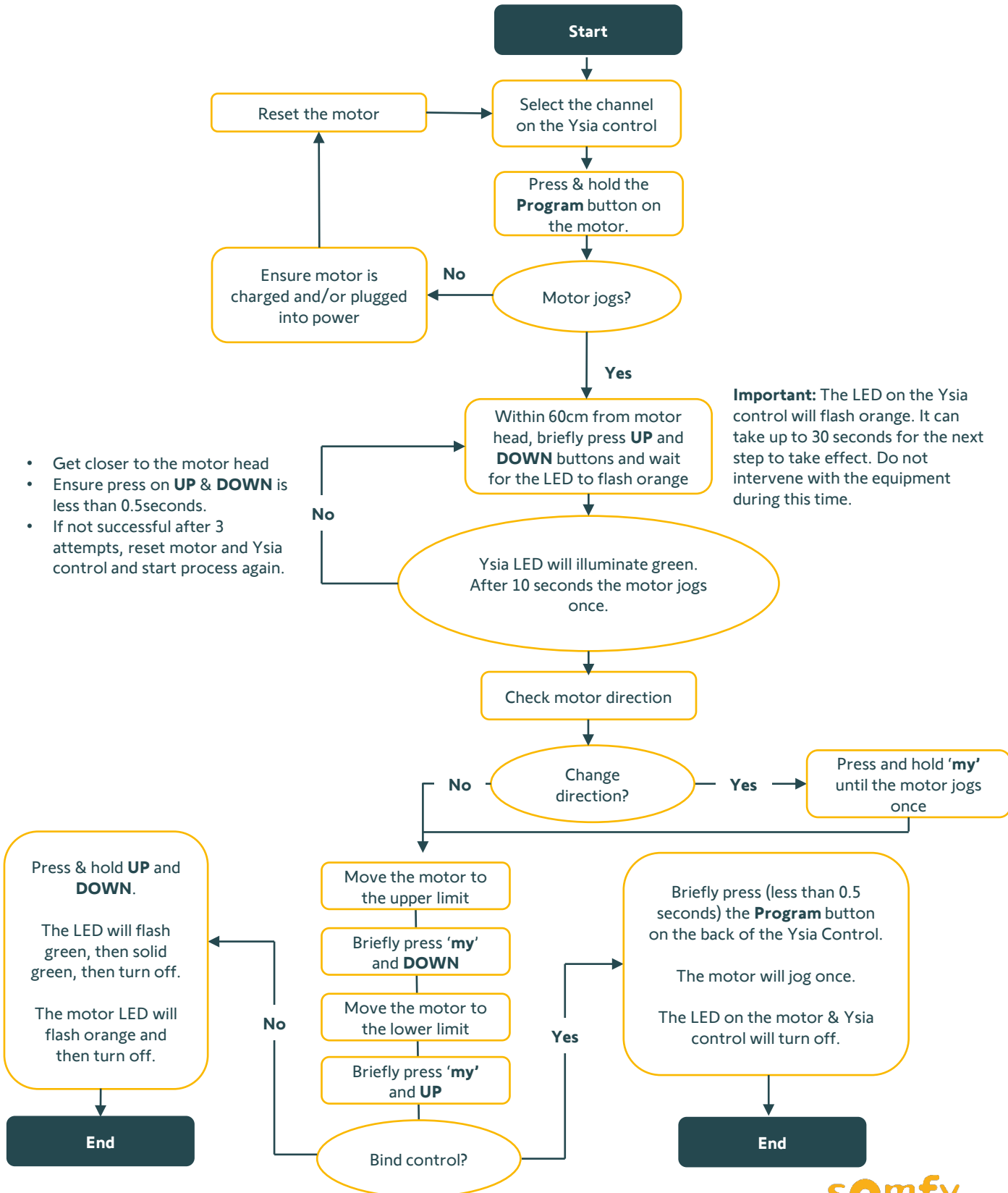
Detach the Ysia control from the motor

Press and hold the **UP** and **DOWN** commands on the control. The LED on the control will flash green, then solid green, then turn off.

The motor LED will flash orange but then turn off.



Setting Motor End Limits



Binding an Ysia Control

Binding an Ysia Control to a Motor with Existing End Limits

Pre-start checklist:

- Ensure the individual motor(s) end limits are set.
- Ensure there is **no** Ysia control bound to the motor. Ensure the Ysia control is reset before commencing the below steps. Refer to page 40 for instructions on resetting the Ysia control.

1 Select the channel on the control

When using a multichannel Ysia control, select the desired channel prior to programming.

If using Ysia 1 Channel, move to step 2.



2 Wake up the motor

Even if the motor LED is flashing orange, press and hold the **Program** button (approx. 3-5 seconds) on the motor head, until the motor jogs once.



3 Put the Ysia into pairing mode

Ensure the Ysia control is within 60cm of the motor head.

Briefly press (less than 0.5 seconds) **UP** & **DOWN** on the Ysia control and **wait**. The LED on the Ysia control will flash orange. It can take up to 30 seconds for the next step to take effect.

Do not touch or intervene with the equipment during this time.



4 Ysia control is successfully paired

When the mesh pairing is successful, the LED on the control will illuminate green, then turn off.

Around 10 seconds later the motor will jog once. The LED on the Ysia control will begin to flash orange.



5 Bind the motor to the control

Briefly press (less than 0.5 seconds) the **Program** button on the back of the Ysia control. The LED on the control will illuminate green. The motor will jog once. The LED on the motor and Ysia control will turn off.

Repeat steps for subsequent motor(s) and channels.



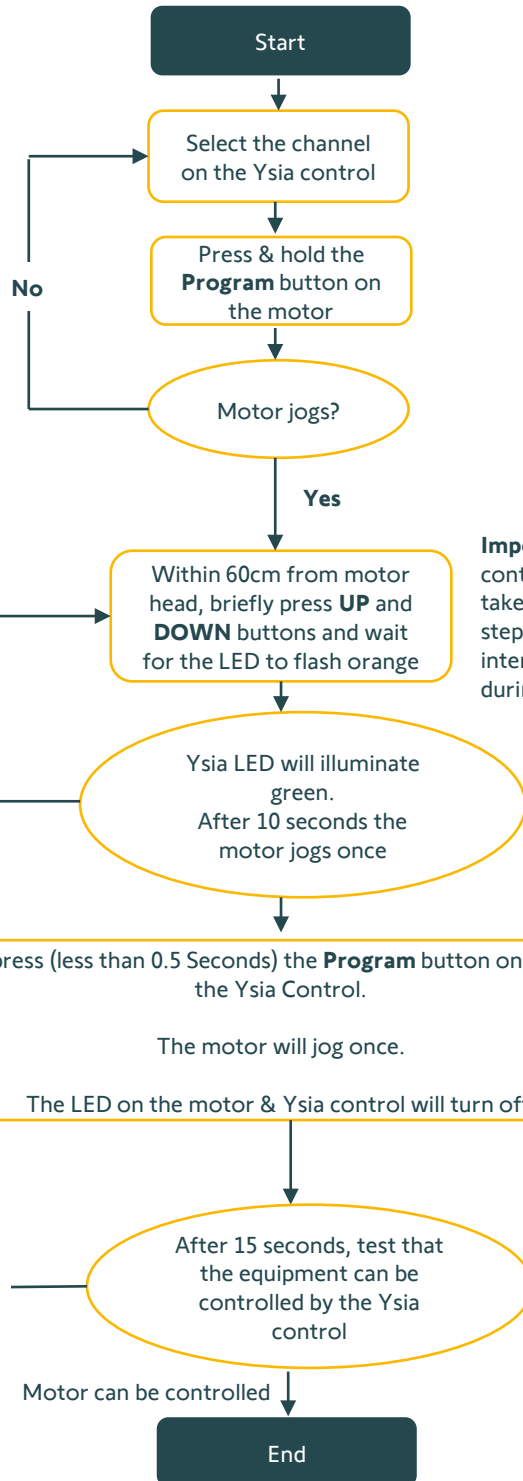
Binding an Ysia Control

Binding an Ysia Control to a Motor with Existing End Limits

- Ensure motor is charged and/or plugged into power.
- Ensure you press and hold the **Program** button on the motor head for 3-5 seconds.
- Ensure the motor has limits set by briefly pressing the program button on the motor head. This will manually send the motor to an end limit. If the motor doesn't go to an end limit, refer to instructions on setting the motor limits.
- If unsuccessful after 3 attempts, reset motor and Ysia control and refer to instructions on setting the motor limits and binding the Ysia control.

- Get closer to the motor head
- Ensure press on **UP & DOWN** is less than 0.5seconds.
- If not successful after 3 attempts, reset motor and Ysia control and start process again.

- Refer to instructions to **adjust motor end limits**.
- If issue persists, reset the motor (only) and refer to instructions on setting the motor limits and binding the Ysia control.



Important: The LED on the Ysia control will flash orange. It can take up to 30 seconds for the next step to take effect. Do not intervene with the equipment during this time.

Adjust Motor End Limits

Adjusting the End Limit(s) to a Motor

Pre-start checklist:

- Ensure the individual motor(s) end limits are set.
- Ensure the Ysia control is bound to the motor.

1 Activate programming mode

Ensure the Ysia control is within 60cm of the motor head.

Press and hold the **Program** button on the Ysia control until the LED sequence is achieved:

GREEN > RED > GREEN

The motor will jog once.



2 Activate the motor adjustment mode

Ensure the Ysia control is within 60cm of the motor head.

Briefly press (less than 0.5 seconds) **UP & DOWN** on the Ysia control and **wait**. The LED on the control will flash orange. It can take up to 30 seconds for the next step to take effect.

Do not touch or intervene with the equipment during this time.



3 Ysia & motor are in programming mode

When the mesh pairing is successful, the LED on the control will illuminate green. Around 10 seconds later the motor will jog once.

The LED on the Ysia control will flash orange.



4 Check/change the motor rotation

Press and hold **UP** or **DOWN** on the Ysia control to check the motor direction.

If the direction is correct, move to next step. If incorrect, press and hold **'my'** button until the motor jogs once.



Adjust Motor End Limits

5

Adjust the end limits

Adjust either the **UP** and/or **DOWN** limit as desired.



6

Set the new end limits

To set the upper limit:

Briefly press (less than 0.5 seconds) **DOWN** and 'my' command on the control.



To set the lower limit:

Briefly press (less than 0.5 seconds) **UP** and 'my' command on the control



The motor will jog once to confirm the limit is set.

7

Saving the new end limits

Once one or both limits are adjusted, briefly press (less than 0.5 seconds) the **Program** button on the back of the Ysia control to finalise the new end limits and remote binding.

The motor will jog once and the LED on the motor and Ysia control will turn off.



Adjust Motor Rotation

Adjusting the Rotation Direction on a Motor with End Limit(s)

Pre-start checklist:

- Ensure the individual motor(s) end limits are set.
- Ensure the Ysia control is bound to the motor.

1

Select the channel on the Ysia control

Using the channel selector button on the multi-channel Ysia control, identify the desired motor.

If using Ysia 1 channel, move to step 2.



2

Activate programming mode

Ensure the Ysia control is within 60 cm of the motor head.

Press and hold the **Program** button on the Ysia control until the LED sequence is achieved:

GREEN > RED > GREEN

The motor will jog once.



3

Activate the motor adjustment mode

Ensure the Ysia control is within 60cm of the motor head.

Briefly press (less than 0.5 seconds) **UP & DOWN** on the Ysia control and **wait**. The LED on the Ysia control will flash orange. It can take up to 30 seconds for the next step to take effect.

Do not touch or intervene with the equipment during this time.



4

Ysia & motor are in programming mode

When the mesh pairing is successful, the LED on the Ysia control will illuminate green. Around 10 seconds later the motor will jog once.

The LED on the Ysia control will flash orange.



Adjust Motor Rotation

5

Change the motor rotation

The LED on the Ysia control will flash orange.

Press and hold the '**my**' button until the motor jogs once.



6

Finalise the adjustment and bind the Ysia control

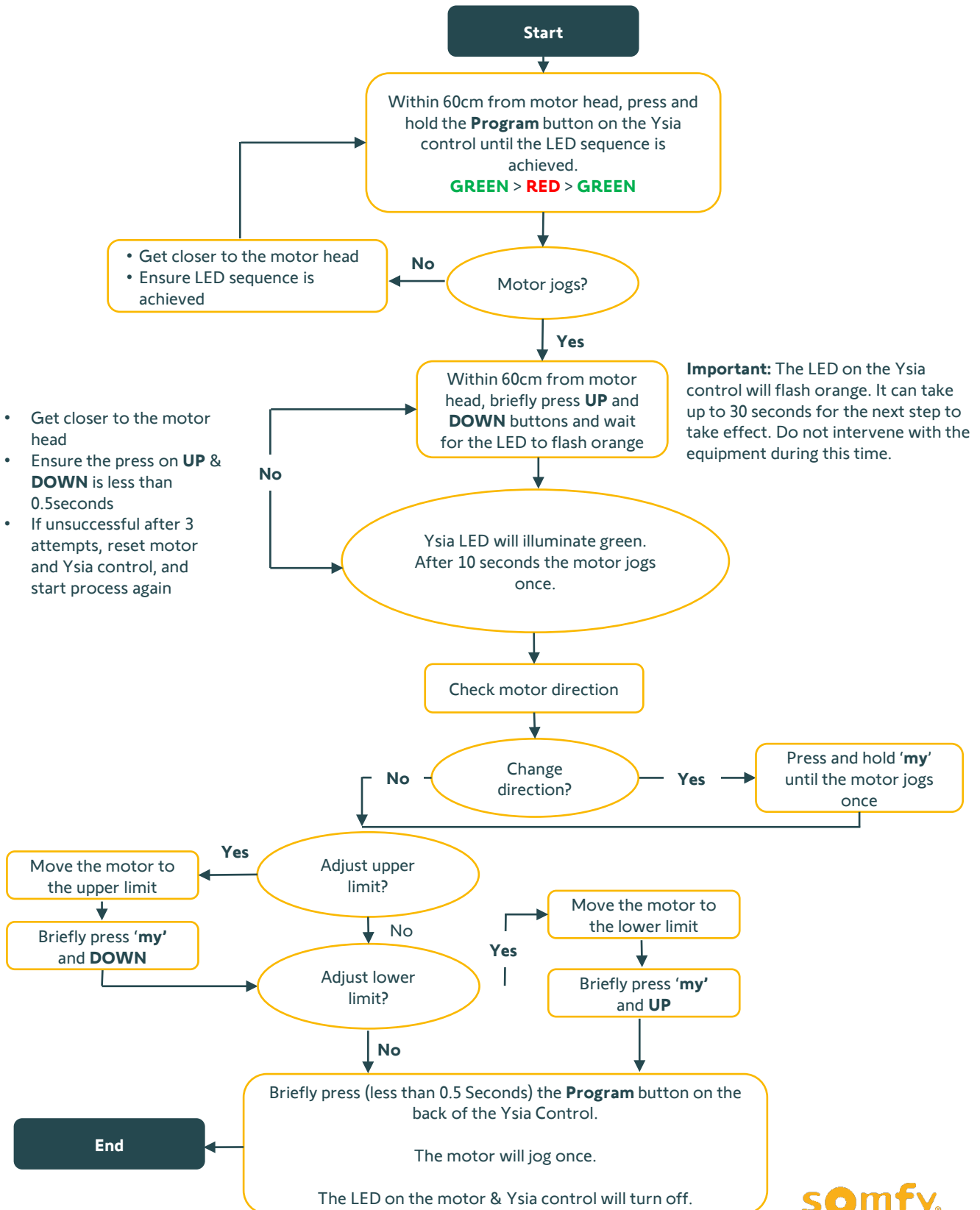
Briefly press (less than 0.5 seconds) the **Program** button on the back of the Ysia control to finalise the motor rotation and remote binding.

The motor will jog once and the LED on the motor and Ysia control will turn off.



Adjust Motor Settings

Adjust Motor End Limits (and/or) Change Motor Rotation



'my' Favourite Position

Setting the 'my' Favourite Position on a Motor

Pre-start checklist:

- Ensure the motor is in 'User Mode' meaning limits are set and control is paired.

1 Select the channel on the Ysia control

Select the desired channel prior to programming.

If using Ysia 1 Channel, move to step 2.



2 Send motor to desired position

Using **UP** or **DOWN** commands on the Ysia control, move the motor and stop at the desired position.



3 Set the 'my' position

Press and hold '**my**' button on the control (approx. 5 secs).

The LED on the Ysia control will blink green.



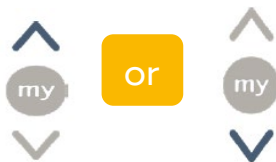
Release the '**my**' button once the LED has is solid green.

The motor will jog once.



4 Test 'my' position setting

Using the **UP** or **DOWN** command on the Ysia control, send the motor to the preset upper or lower limit.



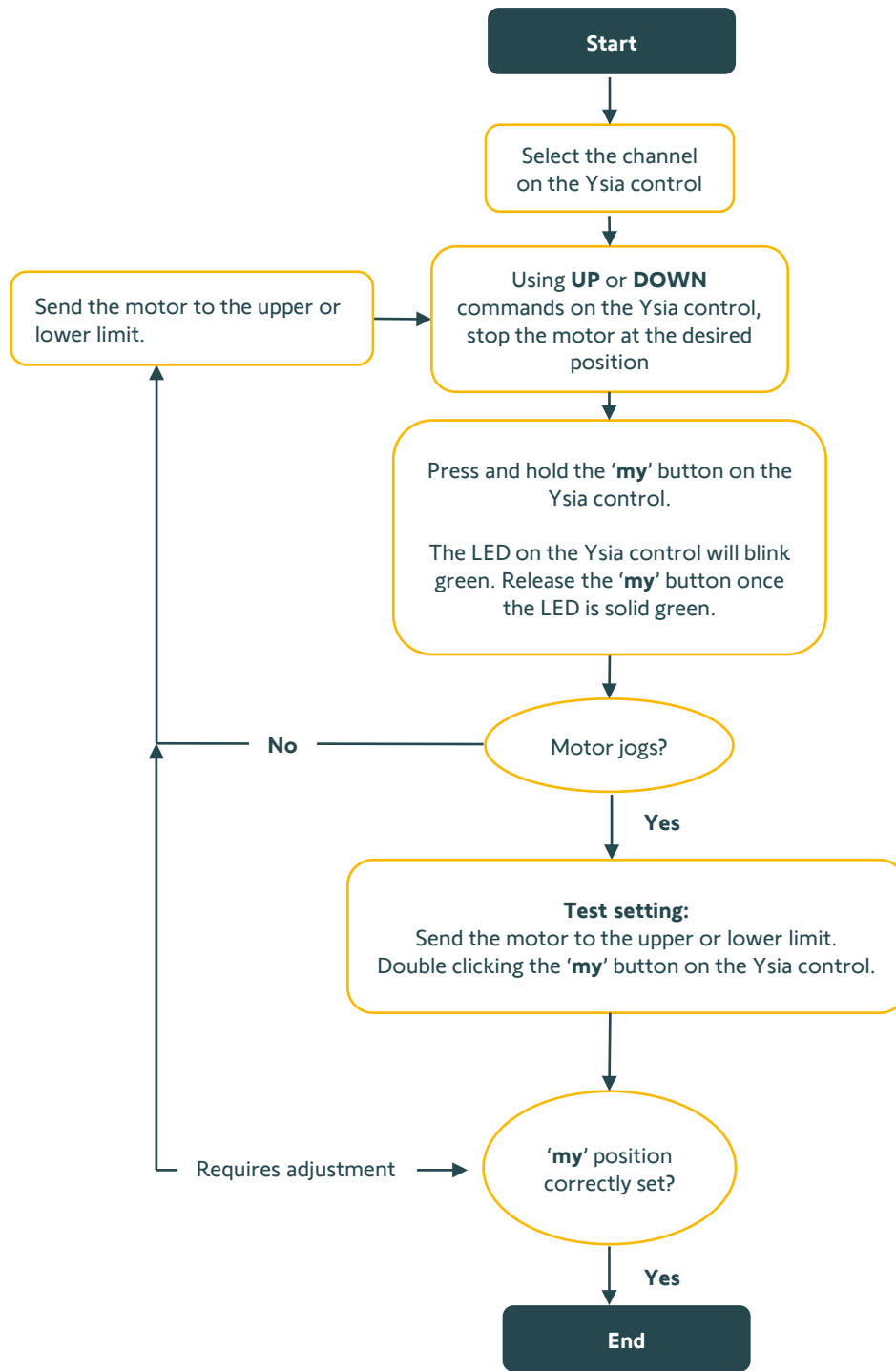
Double press the '**my**' button on the Ysia control.



Note: Once set, a '**my**' position can be adjusted, but not deleted without factory resetting the motor or using TaHoma pro application.

'my' Favourite Position

Setting the 'my' Favourite Position on a Motor



Group Channel

Copy/paste Motors to a Group Channel Using a Multichannel Ysia

Pre-start checklist:

- Ensure the individual motor limits are set to the individual multichannel Ysia control channels.

1

Select the channel on the Ysia control

Using the channel selector button on the multichannel Ysia control, identify the desired motor.



2

Activate programming mode

Ensure the Ysia control is within 60 cm of the motor head.

Press and hold the **Program** button on the Ysia control until the LED sequence is achieved:

GREEN > RED > GREEN

The motor will jog once.



3

Select the group channel

Select the desired group channel on the Ysia control.
This must be different to the channel selected in step 1.



4

Set the group channel

Ensure the Ysia control is within 60cm of the motor head.

Briefly press (less than 0.5 seconds) the **Program** button on the Ysia control.

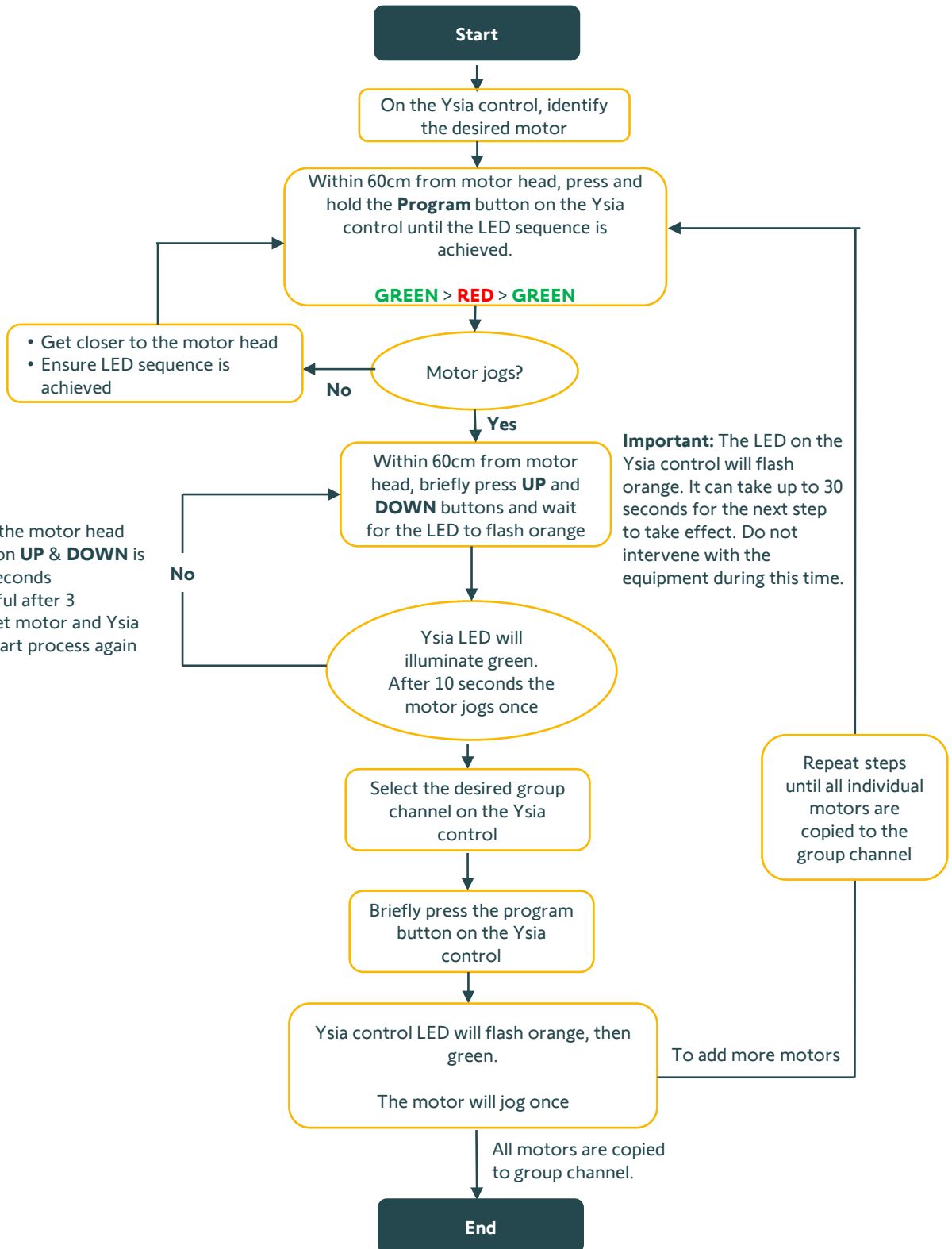
The LED on the Ysia control will flash orange, then green. The motor will jog once.

Repeat steps, until all individual motors are copied to the group channel.



Group Channel

Copy/Paste Motors to a Group Channel Using a Multichannel Ysia



- Get closer to the motor head
- Ensure press on **UP** & **DOWN** is less than 0.5seconds
- If not successful after 3 attempts, reset motor and Ysia control and start process again

Group Motors with Ysia 1

Pairing 2 or more Motors to an Ysia 1 Channel Control

Pre-start checklist:

- Ensure the individual motor(s) end limits are set.
- Ensure there is **no** Ysia control bound to the motor. To detach a motor from a remote, press and hold the motor **Program** button until the motor jogs twice. Ensure the Ysia control is reset before commencing the below steps. Refer to page 40 for instructions on resetting the Ysia control.

1

Wake up the first motor

Even if the motor LED is flashing orange, press and hold the **Program** button (approx. 3-5 seconds) on the motor head, until the motor jogs once.



2

Put the Ysia into pairing mode

Ensure the Ysia control is within 60cm of the motor head.

Briefly press (less than 0.5 seconds) **UP & DOWN** on the Ysia control and **wait**. The LED on the Ysia control will flash orange. It can take up to 30 seconds for the next step to take effect.



Do not touch or intervene with the equipment during this time.

3

Ysia control is successfully paired

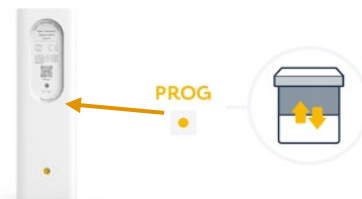
When the mesh pairing is successful, the LED on the Ysia control will illuminate green. Around 10 seconds later the motor will jog once.



4

Bind the Ysia control to the first motor

Briefly press (less than 0.5 seconds) the **Program** button on the back of the Ysia control. The motor will jog once. The LED on the motor and Ysia control will turn off.



Group Motors with Ysia 1

5

Wake up the second motor

Even if the motor LED is flashing orange, press and hold the **Program** button (approx. 3-5 seconds) on the motor head, until the motor jogs once.



6

Binding the control

Ensure the Ysia control is within 60cm of the motor head.

Briefly press (less than 0.5 seconds) the **Program** button on the back of the Ysia control. The LED on the Ysia control will flash orange. It can take up to 30 seconds for the next step to take effect.



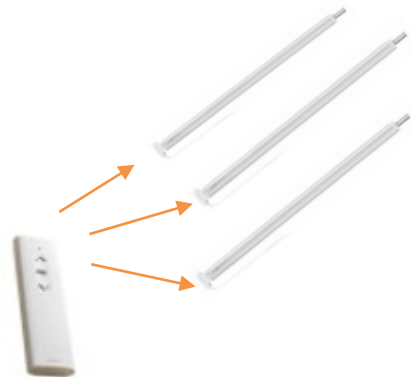
Do not touch or intervene with the equipment during this time.

7

Finalise and repeat

The LED on the Ysia control will flash orange, then green. The motor will jog once.

Repeat steps 5 – 7, until balance of motors are paired to the same Ysia 1 channel control.



Group Channel

Pairing 2 or more Motors to an Ysia 1 Channel Control

First Motor

- Get closer to the motor head
- Ensure press on **UP & DOWN** is less than 0.5seconds
- Press & hold the **Program** button on the motor for two jogs. Start from step 1
- If unsuccessful after 3 attempts, reset motor and Ysia control and start process again

Important: The LED on the Ysia control will flash orange. It can take up to 30 seconds for the next step to take effect. Do not intervene with the equipment during this time.

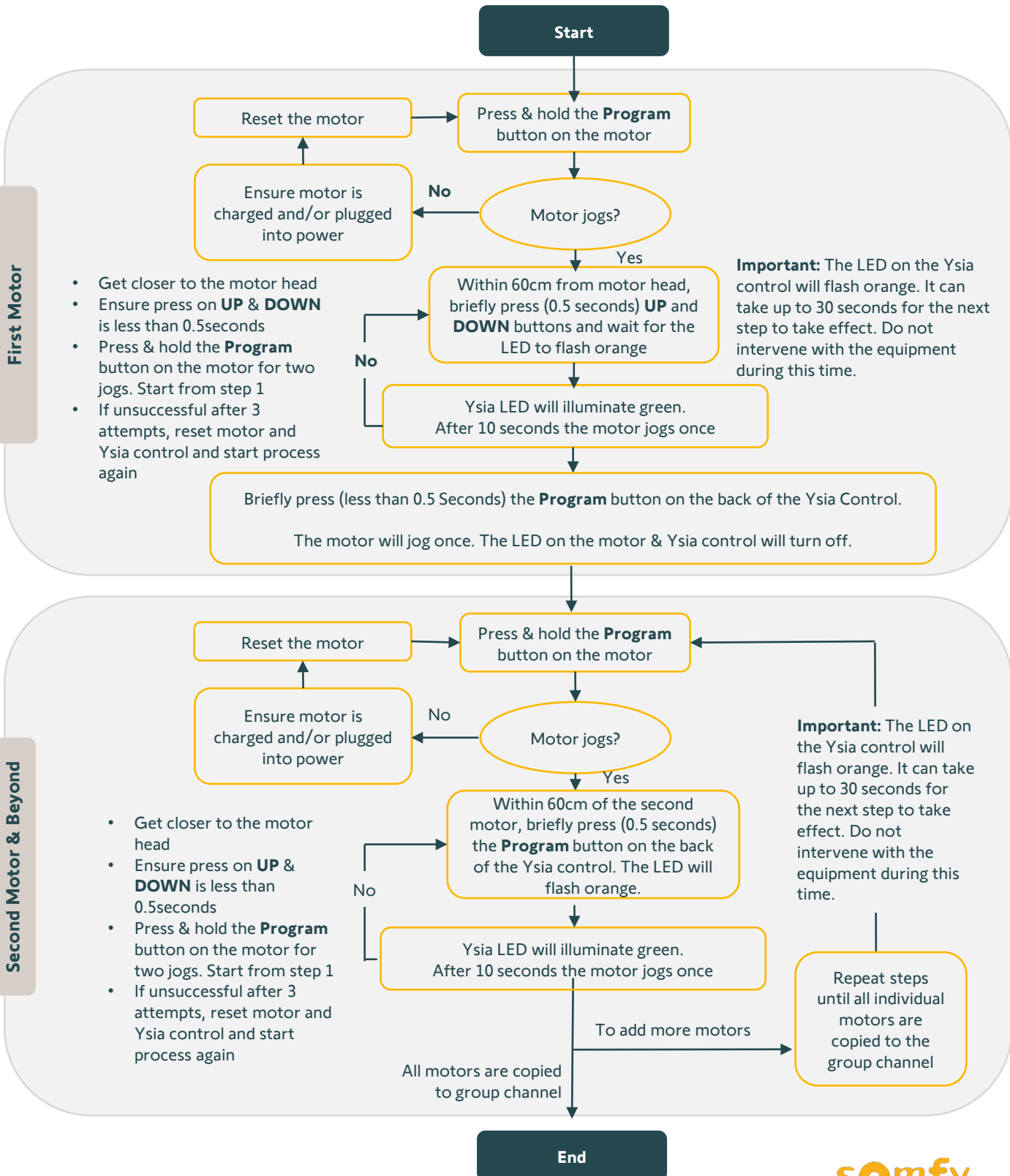
Second Motor & Beyond

- Get closer to the motor head
- Ensure press on **UP & DOWN** is less than 0.5seconds
- Press & hold the **Program** button on the motor for two jogs. Start from step 1
- If unsuccessful after 3 attempts, reset motor and Ysia control and start process again

Important: The LED on the Ysia control will flash orange. It can take up to 30 seconds for the next step to take effect. Do not intervene with the equipment during this time.

Repeat steps until all individual motors are copied to the group channel

All motors are copied to group channel



Setting Curtain End Limits

Setting End Limits on a Glydea Ultra + Zigbee Module and Binding an Ysia Control

Pre-start checklist:

- Ensure the Glydea Ultra RTS motor is in factory mode (no limits set/no RTS or Zigbee Ysia control paired)

1

Insert the Glydea Ultra Zigbee Module & power up the motor

Remove the motor cover from the base of the motor.

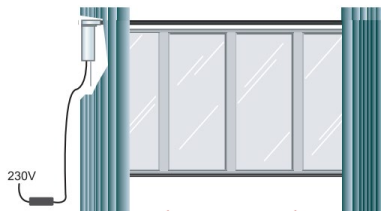


Insert the Glydea Ultra Zigbee module into the slot.

2

Mount the motor and power it up

Mount the motor onto the curtain track.



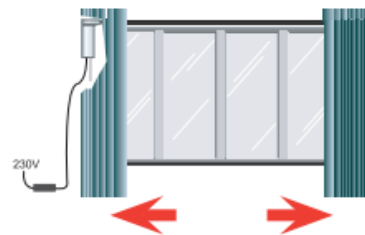
Plug the motor into mains power.

3

Self-learning end limits (touch motion method)

Gently tug the curtain fabric to manually trigger the touch motion function. The motor will automatically begin to learn its end limits.

Don't stop the motor until the end limits have been reached and the motor has completely stopped.



4

Put the motor into discovery mode

Press and hold the **S** button on the bottom of the motor (Approx. 3-5 seconds) until the motor jogs once.

The LED on the motor will flash orange.



Setting Curtain End Limits

5

Put the Ysia control into pairing mode

Ensure the Ysia control is within 60cm of the motor head. Briefly press (less than 0.5 seconds) the **Program** button on the back of the Ysia control. The LED on the Ysia control will flash orange. It can take up to 30 seconds for the next step to take effect.



Do not touch or intervene with the equipment during this time.

6

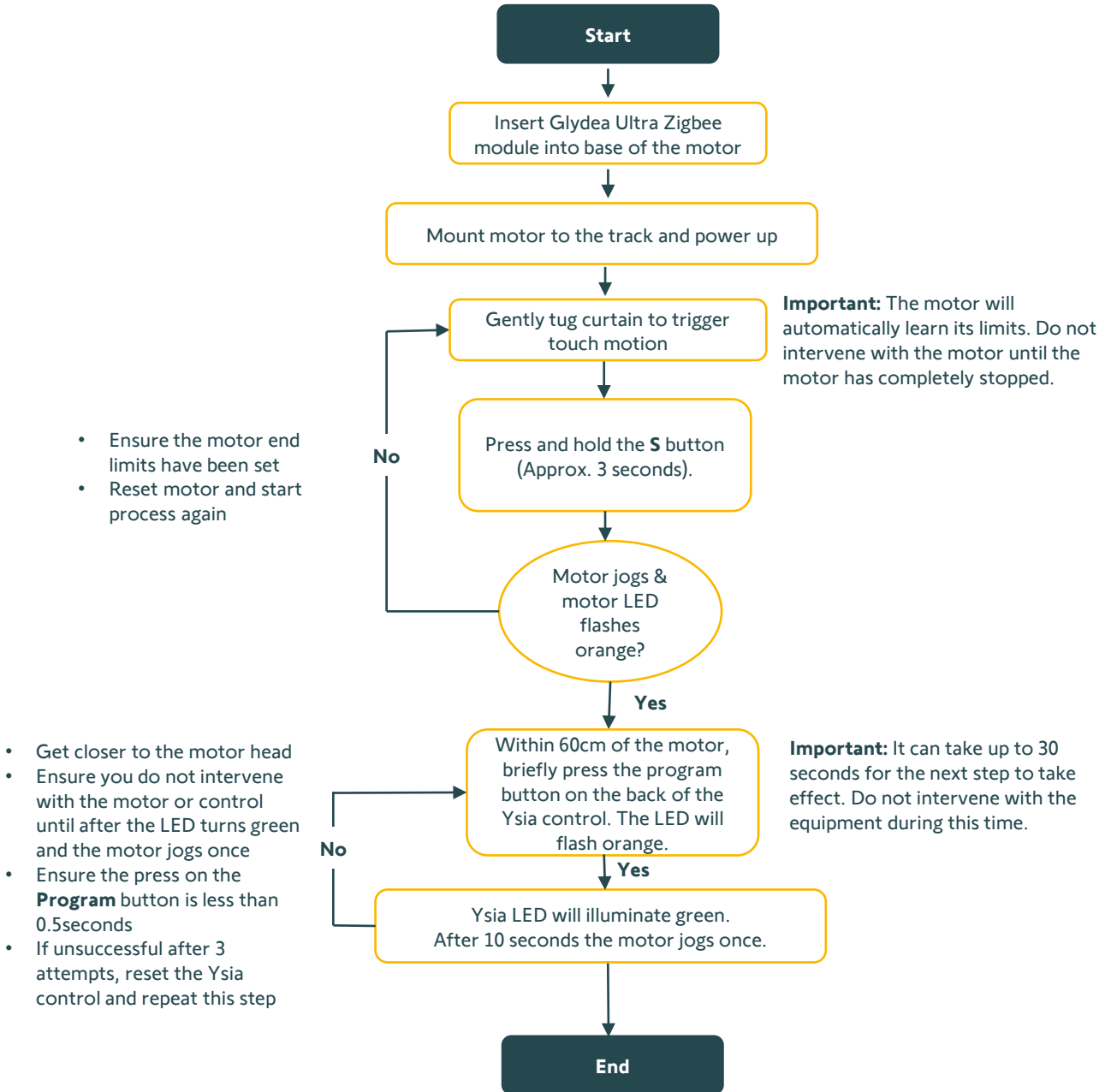
Mount the motor and power it up

When the mesh pairing is successful, the LED on the Ysia control will illuminate green. Around 10 seconds later the motor will jog once.



Setting Curtain End Limits

Setting End Limits on a Glydea Ultra + Zigbee Module and Binding an Ysia Control



Adding Glydea Zigbee Module

Adding a Glydea Ultra Zigbee Module to a Glydea Ultra RTS Curtain Motor with Existing End Limits and then Binding an Ysia Control

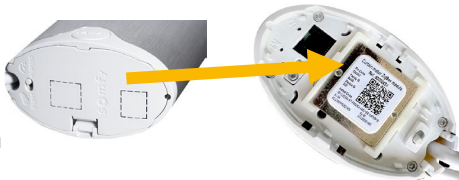
Pre-start checklist:

- Ensure the Glydea Ultra RTS motor has preset end limits.
- Do not dismount the curtain motor from the track.

1 Insert the Glydea Ultra Zigbee Module and power up the motor

Turn off mains power to the motor.

Remove the motor cover from the base of the motor.



Insert the Glydea Ultra Zigbee module into the slot.

Plug the motor into mains power.

2 Put the motor into discovery mode

Press and hold the **S** button on the bottom of the motor (Approx. 3-5 seconds) until the motor jogs once.

The LED on the motor will flash orange.



3 Put the Ysia control into pairing mode

Ensure the Ysia control is within 60cm of the motor head.

Briefly press (less than 0.5 seconds) the **Program** button on the back of the Ysia control. The LED on the Ysia control will flash orange. It can take up to 1 minute for the next step to take effect.

Do not touch or intervene with the equipment during this time.



4 Mount the motor and power it up

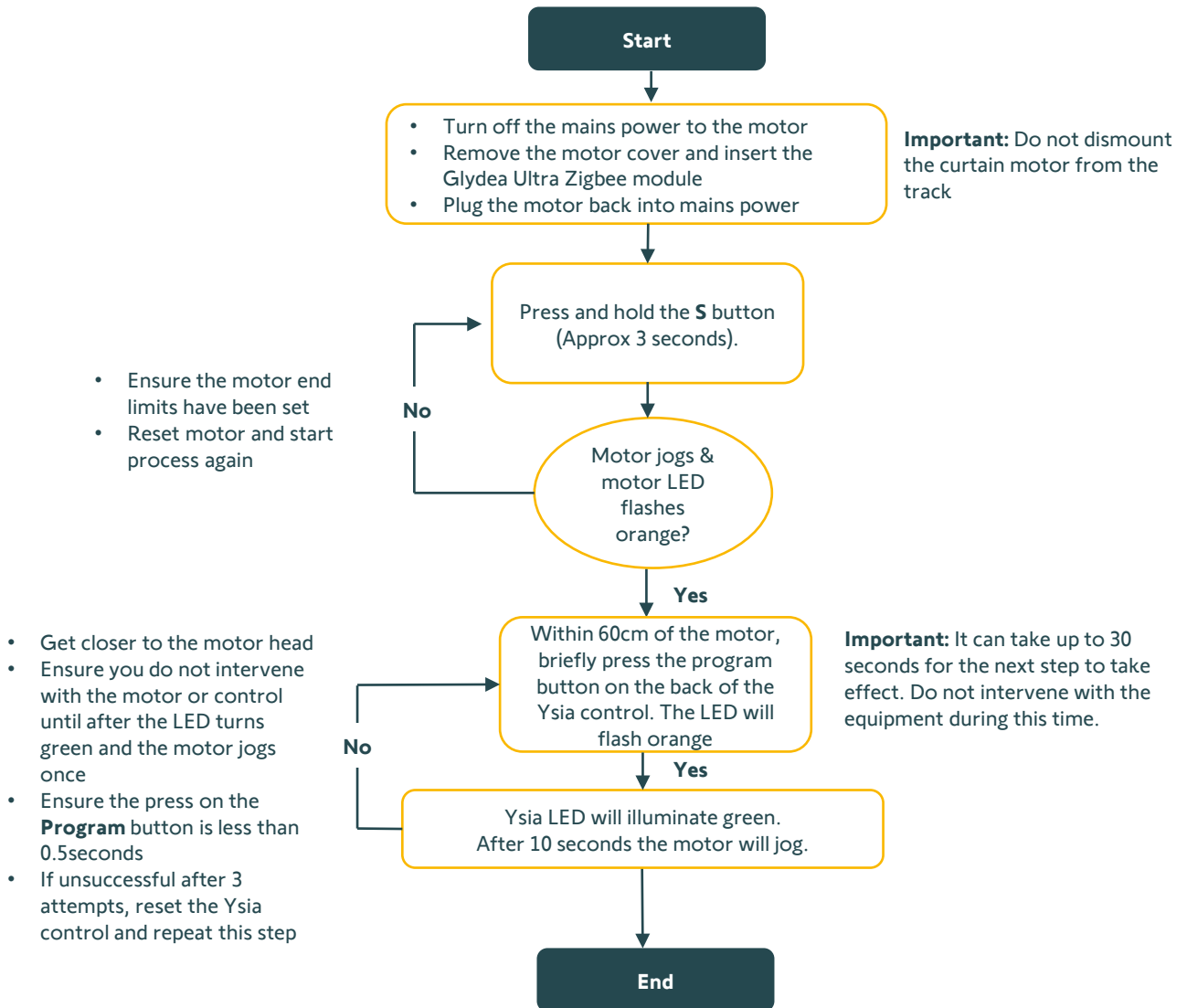
When the mesh pairing is successful, the LED on the Ysia control will illuminate green. Around 10 seconds later the motor will jog once.



Note: Any paired RTS controls will no longer operate the curtain motor once the Glydea Ultra Zigbee module is inserted. Please use only the paired Ysia control.

Setting Curtain End Limits

Adding a Glydea Ultra Zigbee Module to a Glydea Ultra RTS Curtain Motor with Existing End Limits set and then Binding an Ysia Control



TaHoma switch & Zigbee

TaHoma switch & mesh network set-up considerations

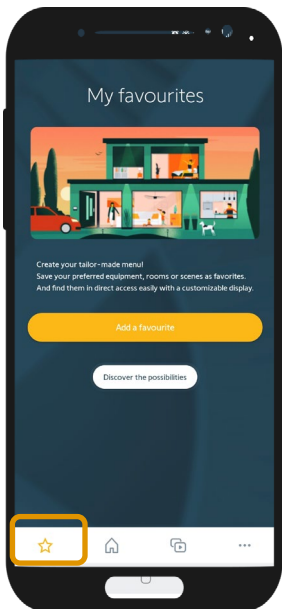
- TaHoma switch [1871147] requires an active, secure internet connection. The TaHoma switch can be configured either via WiFi or ethernet cable plugged into the internet router. To connect via ethernet cable, an ethernet adaptor (sold separately) is required [9028054].
- All Smart Shading equipment **must** be paired to the TaHoma switch as individual products; this includes all Ysia remote controls. If an Ysia control is bound to a Smart Shading motor, the binding will automatically disconnect once the motor or Ysia control is paired to the TaHoma switch hub. Once all Smart Shading equipment is paired to the TaHoma switch, ensure all the desired Smart Shading motors are rebound to the Ysia controls.
- All Smart Shading motors **must** have their end limits set prior to pairing equipment to a TaHoma switch hub.
- Requires an active email address to create a TaHoma® switch account. It cannot be the same email address used with an existing Connexoon Window RTS or TaHoma switch.
- Ensure you have downloaded and set up an account with all 3rd party compatible applications on your smart device.
- Any TaHoma by Somfy application equipment favourites are linked to a smart phone or device.
- For all Smart Shading equipment, ensure you have the motor and Ysia control QR code ready and accessible.
- For a seamless configuration experience, Somfy recommends building a strong Zigbee mesh network. This can be achieved by pairing any wired AC Zigbee motors to the TaHoma switch first. Then Philips Hue Smart Plugs, then WireFree Zigbee motors, followed by any Ysia controls.
- Somfy recommends a maximum of 6 Smart Shading WireFree motors for every 1 Zigbee repeater. Before pairing the 7th Smart Shading WireFree motor to a TaHoma switch, you must first pair an additional repeater. Trusted repeaters include: Sonesse 40 Zigbee AC, Glydea Ultra AC with Zigbee Module, Izymo Motor or On/Off Receiver and or a Philips Hue Smart Plug.
- A Philips Hue Smart Plug can be directly configured to a TaHoma switch hub without the Philips Hue app or Philips Hue bridge.

TaHoma switch & Zigbee

- The two scenario launcher buttons on top of the hub will function with or without an internet connection.
- If a TaHoma switch loses an internet connection:
 - Ysia controls can still operate paired Smart Shading motors.
 - Motors will react to pre-programmed automations (Timers & Scenarios).
 - Motors cannot be controlled via the TaHoma by Somfy application if the TaHoma switch is offline (without internet).
- In a TaHoma switch set up, if there is a power outage, all Smart Shading motors (AC or Battery), will **not** work. In a standalone set up (no hub), Smart Shading WireFree motors operate with or without power.
- Only shading actuators of the same family/group can be paired to the same channel on an Ysia control.

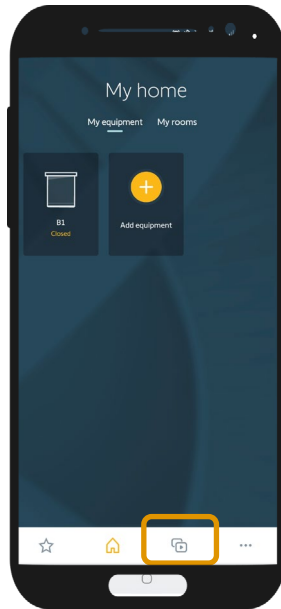
Navigating the TaHoma by Somfy application

Simply click on the icons on the bottom of the screen to navigate the app:



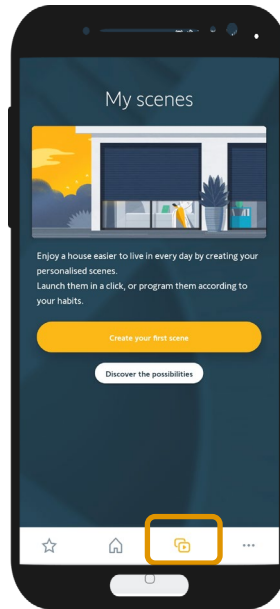
My Favourites:

A shortcut to your most used equipment or personalised scenarios.



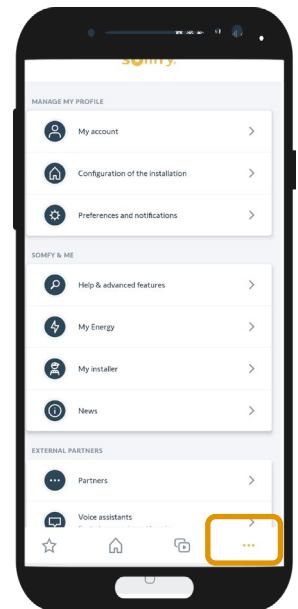
My Home:

A simple and efficient way to control individual or grouped equipment.



My Scenes:

Simplify and personalise your home to suit your lifestyle and routine (includes scheduled timers).



More:

Manage your TaHoma account & profile, paired Ysia controls, scenario launchers and more...

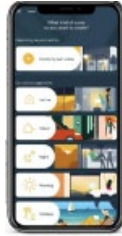
TaHoma switch Set up

Launch the TaHoma by Somfy Application

1

Launch the TaHoma by Somfy application and create a profile

a. Search for TaHoma by Somfy in the Apple or Google Play app store on your smartphone or smart device.

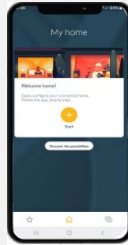


b. Download the TaHoma by Somfy app onto your smartphone or smart device.



c. Open the TaHoma by Somfy application.

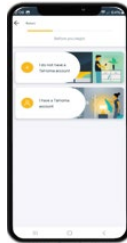
Click 'Start' and select your country.



d. Select the TaHoma switch hub.



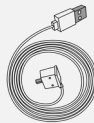
e. Select 'I do not have a TaHoma account'.



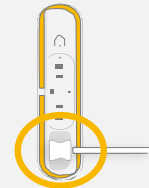
2

Connect the TaHoma switch to power

a. Connect the power adaptor to USB power cable.



b. Insert the micro-USB into the bottom of the box.

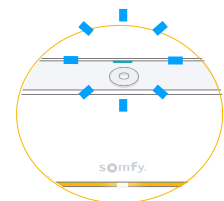


c. Ensure the power is turned on.



d. The LED light on your box will illuminate blue.

If the LED light is not blinking blue, follow the in-app steps to troubleshoot.



TaHoma switch set up

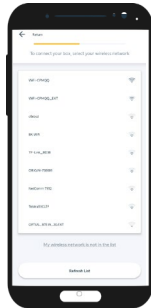
Setting up a TaHoma switch hub

3

Connect the TaHoma switch to the internet

a. If prompted, enable location and Bluetooth access.

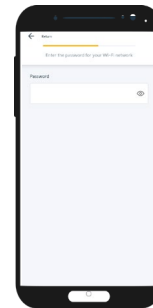
Select your 2.4GHz (4G) WiFi.



b. Enter your WiFi network password.

Click 'Next'.

Click 'Link my account'.



4

Create a TaHoma account or log in

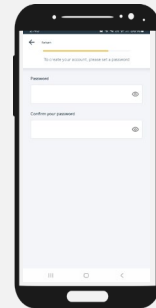
a. Enter a preferred email address to create your Somfy account/log in.

Click 'Next'.



b. Add a password* to secure the new Somfy account.

Click 'Next'.



c. Enter your name.

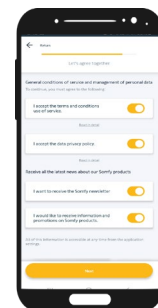
Click 'Next'.



d. Accept the Terms & Conditions and select your Somfy communication preferences.

Click 'Next'.

Click 'Finish'.



The TaHoma switch hub may require a software update. Please keep the app open during this time. Whilst the TaHoma switch hub software is updating, the LED on the bottom of the hub will flash red.

* The password must contain at least 8 characters comprised of at least one capital letter, a lowercase letter and one number.

TaHoma switch

Setting up a TaHoma switch hub

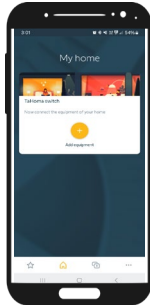
Pre-start checklist:

- Ensure the motor limits have been set prior to pairing to the TaHoma switch
- Ensure you have the motor QR code ready and accessible

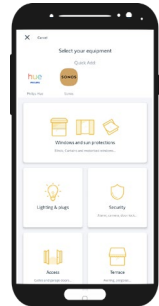
5

Adding Smart Shading actuators

a. Select 'Add Equipment'.

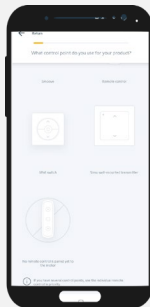


b. Follow the in-application prompts to select the end-product application type.



c. Select 'No remote control is paired yet to the motor'.

Select 'Continue'.

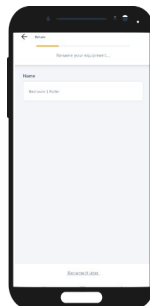


d. Follow the in-application prompts to add the equipment via QR code (Bluetooth) or Zigbee mesh network (discovery mode)*.

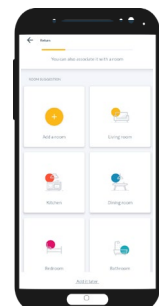
Rename and or personalise the automations of the equipment.



e. Rename the equipment.



f. Add the equipment to a room.



In the event a Smart Shading motor QR code is not available, the TaHoma by Somfy application will prompt you to put the equipment into pairing mode. To place the motor into pairing mode, **Press and hold the Program button on the motor head until the motor jogs twice. Follow the in-application instructions to finalise the configuration.*

TaHoma switch

Setting up a TaHoma switch hub

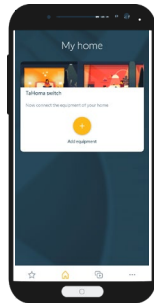
Pre-start checklist:

- Ensure the Ysia control is not connected to another mesh network. If in doubt, factory reset the Ysia control
- Ensure you have the Ysia control QR code ready and accessible

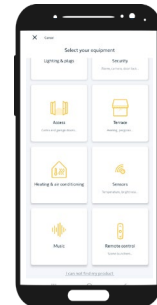
6

Adding Ysia controls

a. Select 'Add Equipment'.



b. Select 'Remote Control'.



c. Select 'Somfy' brand.

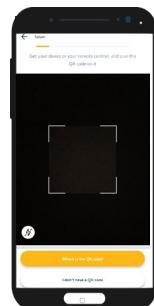


d. Select 'Zigbee remote control'.

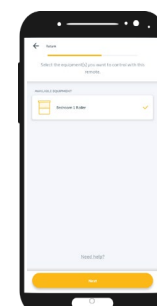


Select 'Continue'.

e. Follow the in-application prompts to add the equipment via QR code (Bluetooth) or Zigbee mesh network (discovery mode)*.



f. Rename the Ysia control.



*In the event the Ysia control QR code is not available, the TaHoma by Somfy application will prompt you to put the Ysia control into pairing mode. To place the Ysia control into pairing mode, **Press and hold the Program button until the following LED sequence on the control is achieved: GREEN > RED > GREEN > RED**. Follow the in-application instructions to finalise the configuration.

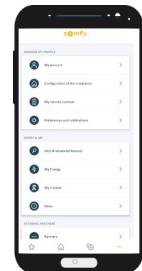
7

Binding Ysia Controls to Smart Shading equipment

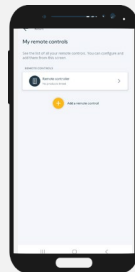
a. Select the *** more tab.



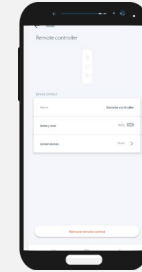
b. Select 'My remote controls'.



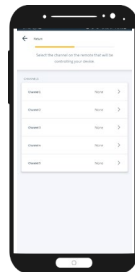
c. Select the remote control.



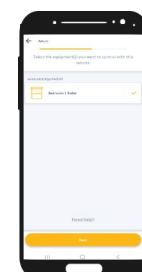
d. Select 'Linked devices'.



e. For Ysia 5 Channel, select the channel you wish to bind the equipment to.

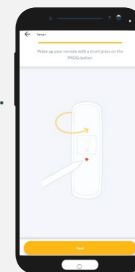


f. Select the equipment(s). The identified motor(s) will jog once when they are selected.



Select 'Next'.

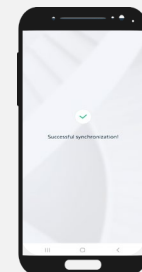
g. Briefly press (less than 0.5 seconds) the **Program** button on the back of the Ysia control.



Select 'Next'.

The LED on the Ysia control will flash orange whilst the binding process is taking place.

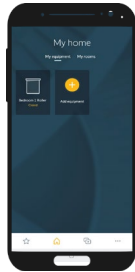
h. Once binding is complete, the LED on the Ysia control blinks green, then turns off.



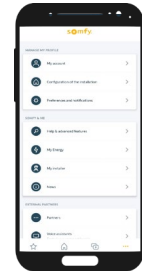
8

Setting up the scenario launchers on the top of the hub

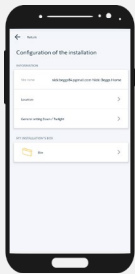
a. Select the *** more tab.



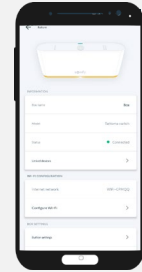
b. Select 'Configuration of the installation'.



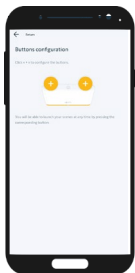
c. Select 'Box'.



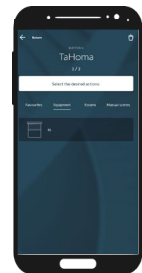
d. Select 'Button Settings'.



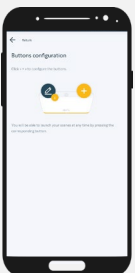
e. Select first +.



f. Follow the in-application prompts to set up the first scenario launcher.



g. Select the next + and repeat steps to set up the second Scenario launcher.



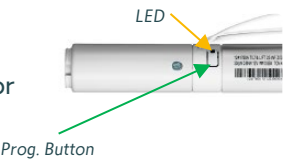
TaHoma switch

Troubleshooting tips when pairing Smart Shading equipment to a TaHoma switch

1. Bring the TaHoma switch and smartphone/device closer to the equipment you are trying to pair.
2. Equipment Intervention:
 - **Motor/Actuator:** Press and hold the motor until it jogs twice (placing the motor into pairing/discovery mode) and repeat configuration process.
 - **Ysia Control:** Factory reset the Ysia control and repeat configuration process.
3. Add the equipment using the alternative method (i.e. QR code or Zigbee mesh discovery).
4. Strengthen the mesh network by adding a trusted Somfy repeater (including Sonesse 40 Zigbee AC, Glydea Ultra AC with Zigbee Module, Izymo Motor or On/Off Receiver and or a Philips Hue Smart Plug).

Smart Shading Equipment

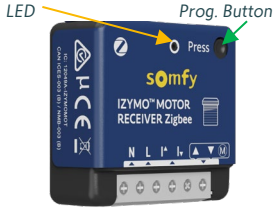
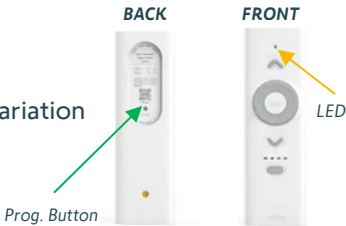

Steps to factory reset Smart Shading equipment

Product	Program button & LED position	Steps + Equipment Indicators/Behaviours	References
Sonesse WireFree Zigbee Tubular motor		Press and hold the Program button on the motor head until the motor jogs 3 times. The LED on the motor head will flash orange then turn off.	1245938 1245937 1245992
Sonesse 40 Zigbee AC Tubular motor		Ensure the power to the motor is connected. Press and hold the Program button on the motor head until the motor jogs 3 times. The LED on the motor head will flash orange then turn off.	1245914 1246314 1245915 1246315 1245916 1246316
Sonesse 30 24V DC Zigbee Tubular motor		Ensure the power to the motor is connected. Press and hold the Program button on the motor head until the motor jogs 3 times. The LED on the motor head will flash orange then turn off.	1241970
Tilt Motor		Press and hold the Program button on the drive until its LED blinks orange and the slats briefly move up and down 3 times	1241782
Tilt & Lift Motor		Press and hold the Program button on the drive until its LED blinks orange and the motorised product briefly moves up and down 3 times	1241674
Glydea Ultra Zigbee Module (inserted into a Glydea Ultra RTS motor)		Remove the motor cover plate to expose the program button and module. Press and hold the 'S' button on the curtain motor until the motor jogs 3 times.	9000043
Glydea Ultra 50 Wirefree Zigbee		Press and hold the Program button on the base of the curtain motor until the motor jogs 3 times.	1246594

● Equipment LED ● Program Button

Smart Shading Equipment

Steps to factory reset Smart Shading equipment

Product	Program button & LED position	Steps + Equipment Indicators/Behaviours	References
Izymo Receiver	 <p>The diagram shows the Izymo Receiver with a yellow arrow pointing to the LED on the top left and a green arrow pointing to the 'Prog. Button' on the top right. The device is labeled 'IZYMO™ MOTOR RECEIVER Zigbee'.</p>	<p>Press and hold the Program button on the front face for 6 seconds until the LED flashes orange.</p> <p>Briefly press the Program button again.</p> <p>The LED will flash alternatively between red and green. Then remain green.</p>	<p>1871259</p> <p>1871260</p>
Ysia 5 Variation control	 <p>The diagram shows the back and front of the Ysia 5 Variation control. A green arrow on the back points to the 'Prog. Button'. A yellow arrow on the front points to the 'LED'.</p>	<p>Press and hold the Program button on the back of the Ysia control (approx. 15 seconds) until the LED sequence is achieved:</p> <p>GREEN > RED > GREEN > RED > GREEN > RED > OFF</p>	<p>1871281</p>
Ysia 1 & 5 control	 <p>The diagram shows the back and front of the Ysia 1 & 5 control. A green arrow on the back points to the 'Prog. Button'. A yellow arrow on the front points to the 'LED'.</p>	<p>Press and hold the Program button on the back of the Ysia control (approx. 15 seconds) until the LED sequence is achieved:</p> <p>GREEN > RED > GREEN > RED > GREEN > RED > OFF</p>	<p>1871153</p> <p>1871154</p>

● Equipment LED ● Program Button



About Somfy

For more than 50 years, Somfy has been driving durable positive motion as a pioneer in window and door automation. Developed with comfort, ease of use, security and sustainability in mind, our seamless and connective solutions are designed to help people make the move to living spaces impactful for humans and with a reduced impact on nature.

A BRAND OF **SOMFY** GROUP

Version 1: May 2025
SOMFY Pty Limited – ABN 77 003 917 244 – 20/38-46 South St,
Rydalmere NSW 2116
T +61 (0)2 8845 7200 – somfy.au@somfy.com